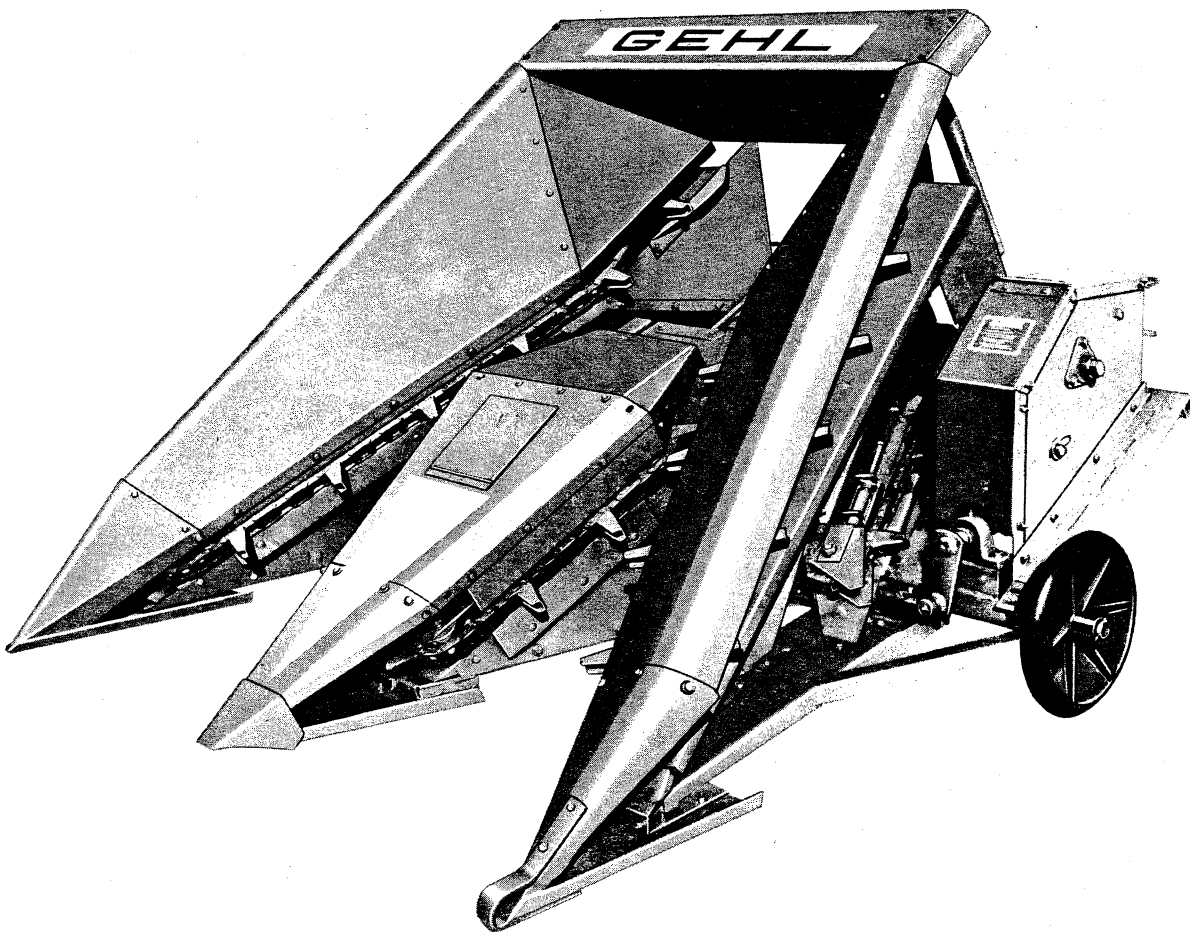


TR 600

Two Row Attachment



Service Parts Manual

Form No.
901576
Replaces
900999



TR600 - INTRODUCTION

Mr. Dealer:

Give complete information when ordering service parts. Always give complete part number and also complete part description. The model number and serial number should always be given. Numbers for this unit are stamped on a plate located on the right Main Frame Member adjacent to the Attachment Yoke.

"Right" and "Left" are determined from a position standing behind the unit and facing toward the Gatherer Shoes. From this position, the Sickle and Drive is on the "Left" side. "Front" is the leading side and "Rear" is the trailing side when the tractor is traveling forward.

NOTE: You will find common hardware such as nuts, bolts, etc. listed but not illustrated in parts lists in this manual. Hardware listed with the particular part is for mounting purposes and is not included when the part is ordered for replacement.

Gehl Company reserves the right to make changes or improvements in the design or construction of any part without incurring the obligation to install such changes on any unit previously delivered.

Table of Contents

	Page
Introduction	2
Decal Locations	3
Frame	4-5
Divider	6-7
Gatherer Center Section (Used after Serial No. 7725)	8-9
Gatherer Center Section (Used before Serial No. 7726)	10-11
Gatherer (Used after Serial No. 7725)	12-14
Gatherer (Used before Serial No. 7726)	15-17
Sickle and Sickle Drive	18-20
Numerical Index	21-22

Parts lists in this manual contain various abbreviations. Below is an explanation of these abbreviations.

HN	-	Hexagon Nut
HJN	-	Hexagon Jam Nut
HLN	-	Hexagon Lock Nut
SN	-	Slotted Nut
CN	-	Castellated Nut
WN	-	Wing Nut
PW	-	Plain Washer
LW	-	Lock Washer
ILW	-	Internal Tooth Lock Washer
ELW	-	External Tooth Lock Washer
L.H.	-	Left-Hand Thread
NF	-	National Fine Thread
S-L	-	Self-Locking
DPT	-	Double Pitch Tooth

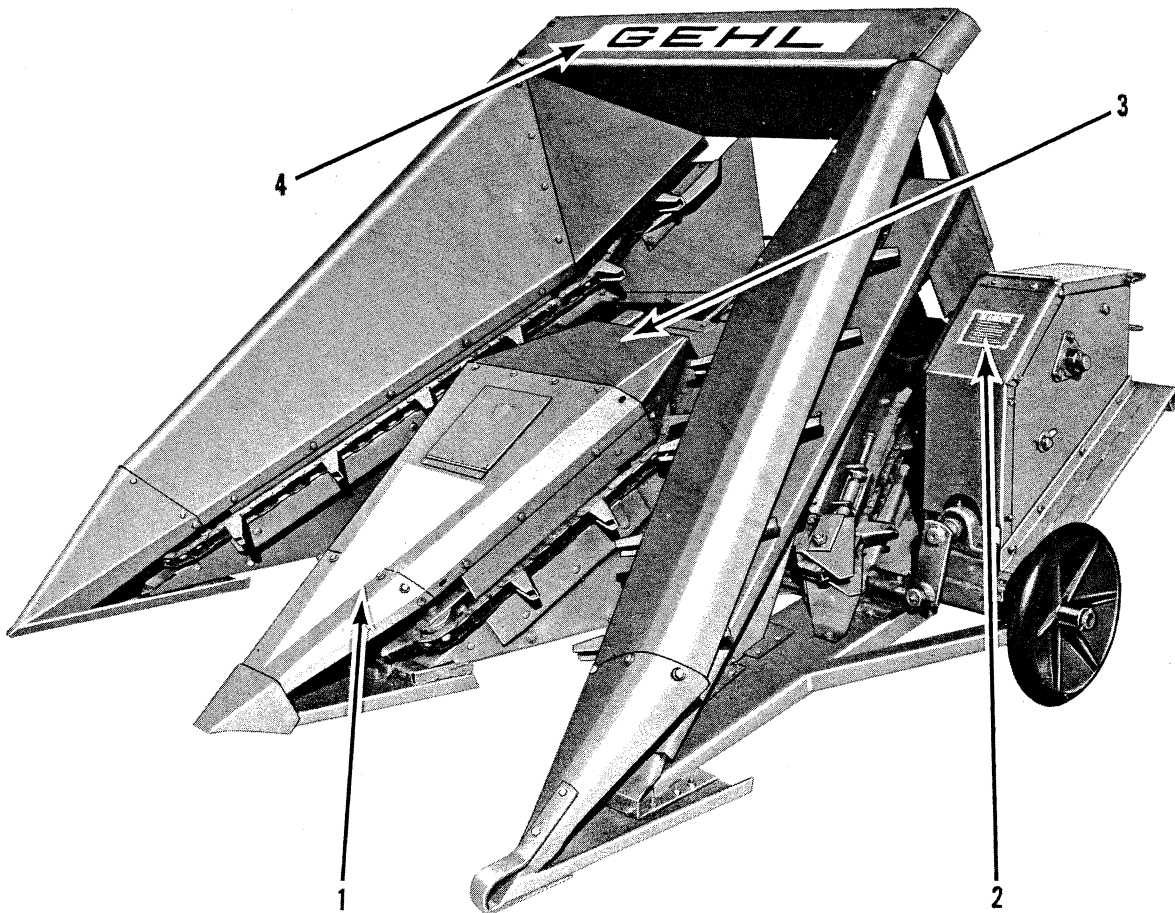
DECAL LOCATIONS

Decal locations are shown to assist in application of new decals in the event of damage to the decal or refinishing of the machine. Check below for their locations.

Surfaces must be free from dirt, dust, grease and other foreign material before applying decals. To apply decals, remove the smaller portion of the decal backing paper and apply this part of the exposed adhesive backing to the clean surface in respective position. Peel other portion of the backing paper off slowly and apply decal.

The Decal Set Number for TR600 is 044180. The set includes the following Decals:

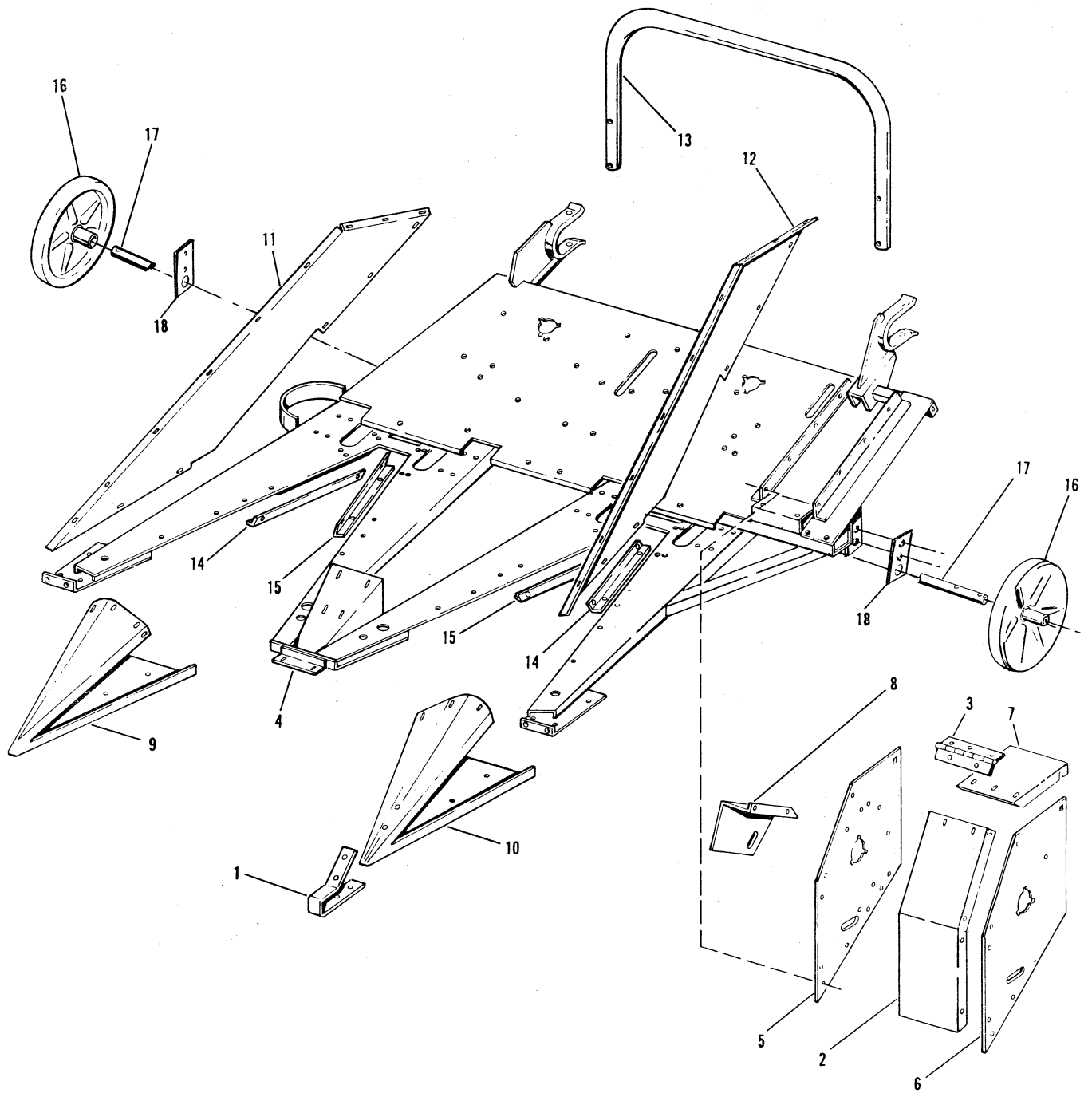
- | | | |
|-----|--------|-----------------------------|
| 1 - | 053361 | Center Point |
| 2 - | 053354 | Be Careful |
| 3 - | 052922 | Idler Adjustments |
| 4 - | 046086 | Gehl (3 $\frac{3}{4}$ x 30) |



NOTE: Always order Decals by set number. DO NOT order Decals separately.

IMPORTANT: Always observe safety rules shown on Decals.

TR600 - FRAME



WARNING - Order By Part Number - Do Not Use Illustration Reference Numbers

ALWAYS GIVE MODEL AND SERIAL NUMBER WHEN ORDERING SERVICE PARTS

