

HL4400

LOADER



SERVICE PARTS MANUAL

Form No.
902580
Replaces
901678

GEHL[®] COMPANY

Mr. Dealer:

When ordering service parts, specify the correct part number, full description, quantity required, the unit model number and serial number.

The model number and serial number should always be given. Numbers for this unit are stamped on a plate located in the compartment to the Rear and Below the Right Load Arm Pivot.

“Right” and “Left” are determined from a position sitting on the Seat and looking forward. From this position, the Foot Throttle is on the Right Side of Console.

GEHL Company reserves the right to make changes or improvements in the design or construction of any part of the unit without incurring the obligation to install such changes on any unit previously delivered.

NOTE: On original Tire replacement, Company policy prohibits the sale of replacement tires for all original GEHL machinery. Replacement Wheel Sets are available and tire size information is called-out with the Wheel Sets to facilitate replacement tire selection. **ALL REPLACEMENT TIRES MUST BE PURCHASED LOCALLY.**

NOTE: Common hardware, such as nuts, cap screws, etc. are listed in the parts list but NOT illustrated. Hardware listed, is for mounting purposes and NOT included when the part is ordered for replacement. For the part numbers of common hardware, refer to the attaching hardware table located inside the back cover.

Standard hardware torques appear in a chart at the end of the manual.

Unless otherwise specified, all Cap Screws or Bolts are Grade 5, cadmium or zinc plated; Hexagon Nuts for Grade 5 Cap Screws or Bolts are Grade B; Hexagon Nuts for other Cap Screws or Bolts are Grade A.

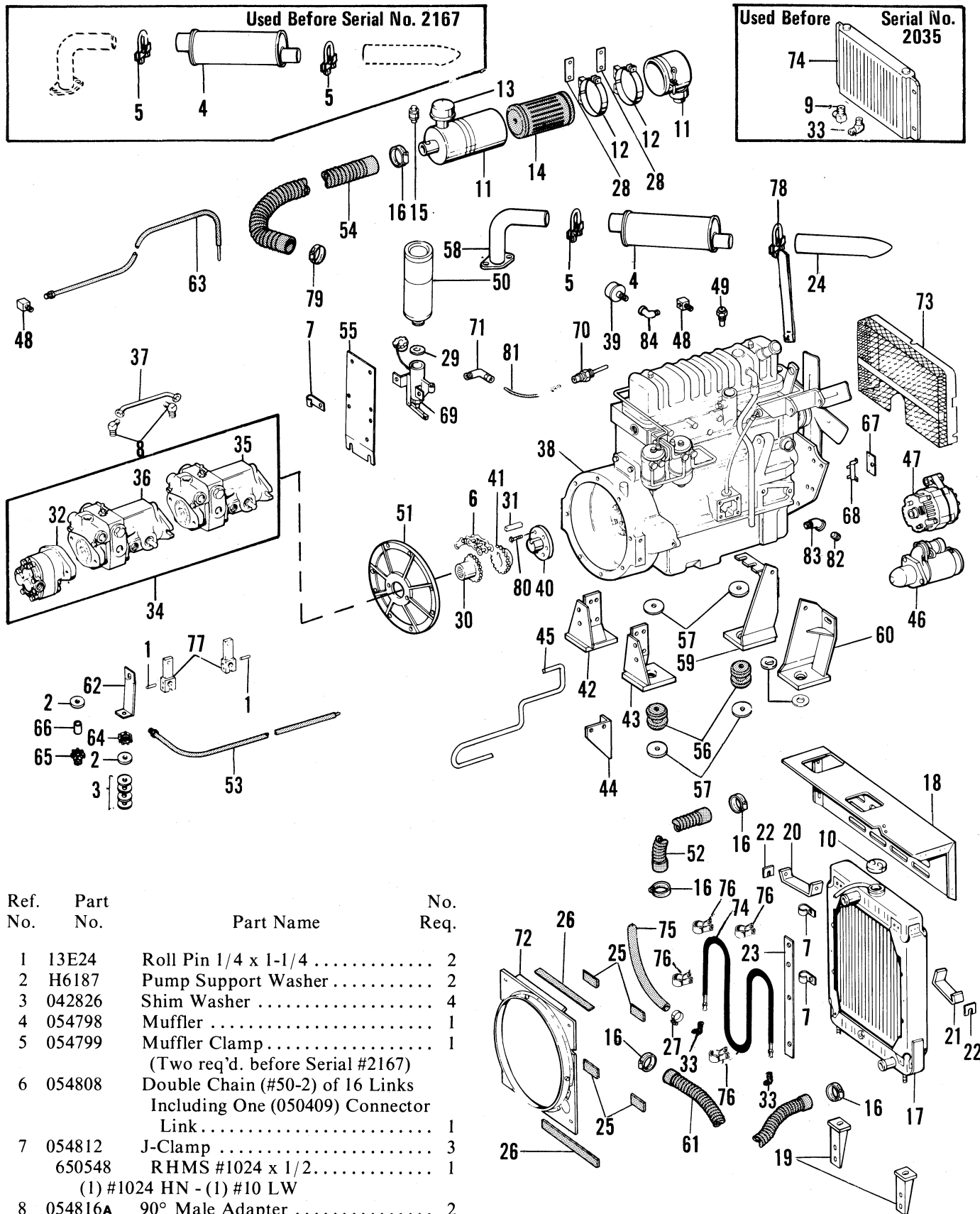
The following abbreviations are used in this manual:

- CB - Carriage Bolt
- HHCS - Hexagon Head Cap Screw
- HWHSTS - Hexagon Washer Head Self-Tapping Screw
- PTHMS - Phillips Truss Head Machine Screw
- RHMS - Round Head Machine Screw
- SHSS - Socket Head Set Screw
- SQHSS - Square Head Set Screw
- LH - Left Hand (Thread)
- NF - National Fine
- RH - Right Hand (Thread)
- SL - Self-locking (Thread)
- DPT - Double Pitch Tooth
- CN - Castellated Nut
- HJN - Hexagon Jam Nut
- HLN - Hexagon Lock Nut
- HMN - Hexagon Machine Nut
- HN - Hexagon Nut
- SN - Slotted Nut
- WN - Wing Nut
- ELW - External (Tooth) Lock Washer
- ILW - Internal (Tooth) Lock Washer
- LW - Lock Washer
- PW - Plain Washer
- NPT - National Pipe Thread
- T - Tooth

TABLE OF CONTENTS

Page	Page
Introduction.....	2
Engines.....	3-14
Perkins.....	3-5
Wisconsin.....	6-7
Ford - Gas.....	8-10
Ford - LPG.....	11-14
Main Frame.....	15-17
Console & Controls.....	18-20
Load Arm.....	21
Axle & Drive.....	22-24
Hydraulic Systems.....	25-31
Wisconsin & Ford Units Before Serial #2167 & #2167 & Perkins Diesel Before Serial #1686 ..	25-26
Wisconsin & Ford Units After Serial #2166 ...	27-28
Perkins Diesel After Serial #1685.....	29-31
Electrical System.....	32-33
Hydraulic Pumps, Motors, Valves & Cylinders.....	34-39
Piston Pump - Front.....	34
Piston Pump - Rear.....	35
Gear Pump.....	36
Hydrostatid Drive Motor.....	37
Lift & Tilt Valve.....	38
Lift Cylinder.....	39
Tilt Cylinder.....	39
Options & Accessories.....	40-47
Light Kit.....	40
Auxiliary Hydraulic Kit.....	41
Rear Hydraulic Kit.....	42
Bucket Tooth.....	43
Cement Bucket.....	43
Drawbar.....	43
Manure Fork.....	43
Pallet Fork.....	43
Fertilizer Bucket.....	44
Foundry Bucket.....	44
Produce Bucket.....	44
Utility Bucket.....	44
Grapple Fork.....	45
All Weather Enclosure.....	46-47
Decal Locations.....	48-49
Numerical Index.....	50-53
Torque Specifications & Attaching Hardware Table.....	Inside Back Cover

HL4400 - ENGINE (PERKINS)



Ref. No.	Part No.	Part Name	No. Req.
1	13E24	Roll Pin 1/4 x 1-1/4	2
2	H6187	Pump Support Washer	2
3	042826	Shim Washer	4
4	054798	Muffler	1
5	054799	Muffler Clamp	1
		(Two req'd. before Serial #2167)	
6	054808	Double Chain (#50-2) of 16 Links Including One (050409) Connector Link	1
7	054812	J-Clamp	3
	650548	RHMS #1024 x 1/2	1
		(1) #1024 HN - (1) #10 LW	
8	054816A	90° Male Adapter	2
9	054854	90° Male Adapter Elbow	1
		(Used before Serial #2035)	
10	054958	Radiator Cap	1

WARNING - Order By Part Number - Do Not Use Illustration Reference Numbers

Continued

HL4400 - ENGINE (PERKINS)

Ref. No.	Part No.	Part Name	No. Req.	Ref. No.	Part No.	Part Name	No. Req.
11	055014	Air Cleaner	1	40	056883	Engine Coupling Shaft	1
12	055015	Mounting Band	2		061577	HHCS 7/16NF x 1-5/8 Gr. 8	5
	650487	HHCS 5/16 x 1	4	41	056985	Engine Coupling Sprocket (16T)...	1
		(4) 5/16 HN - (4) PW - (4) LW			650204	SHSS 5/16 x 3/8	2
13	055016	Air Stack Cap	1	42	056986	Engine Mount - Right Front	1
14	055017	Air Cleaner Element	1		650631	HHCS 5/8 x 4	1
15	055018	Restriction Indicator	1		650633	HHCS 1/2 x 1-1/4NF	2
16	055030	Hose Clamp	5			(2) 1/2 LW	
17	055041	Radiator	1			(1) 5/8 HN - (1) LW	
		(2) 1/2 HN - (2) PW - (2) LW		43	056990	Engine Mount - Left Front	1
18	055042	Radiator Grill	1		650631	HHCS 5/8 x 4	1
	650487	HHCS 5/16 x 1	6		650633	HHCS 1/2NF x 1-1/4	2
		(6) 5/16 HN - (6) PW - (6) LW				(1) 1/2 LW	
19	055044	Radiator Mounting Support	2			(1) 5/8 HN - (1) LW	
	650491	HHCS 3/8 x 1-3/4	4	44	056993	Sedimentor Bracket	1
		(4) 3/8 HN - (8) PW - (4) LW			650490	HHCS 3/8 x 1	4
20	055047	Radiator Brace - Right	1			(4) 3/8 HN - (2) PW - (4) LW	
	650486	HHCS 5/16 x 3/4	1	45	056994	Trap To Lift Pump Tube	1
	650491	HHCS 3/8 x 1-1/4	1	46	056995	Starting Motor	1
		(1) 5/16 PW - (1) LW		47	056996*	Alternator	1
		(1) 3/8 HN - (2) PW - (1) LW		48	056997	90° Elbow	2
21	055048	Radiator Brace - Left	1	49	056999	Temperature Gage Sender Unit	1
	650486	HHCS 5/16 x 3/4	1	50	057000	Ether Cylinder	1
	650491	HHCS 3/8 x 1-1/4	1	51	057002	Pump Mounting Adapter	1
		(1) 5/16 PW - (1) LW			650634	HHCS 3/8 x 1	8
		(1) 3/8 HN - (2) PW - (1) LW				(8) 3/8 PW - (8) LW	
22	055049	Radiator Shim	2	52	057004	Radiator Hose - Upper	1
23	055050	Radiator Shim	2	53	057006	Tank To Trap Hose - 34"	1
		(Used before Serial #2035)		54	057007	Air Cleaner Hose - 34"	1
24	055108	Tail Pipe	1	55	057010	Ether Bracket	1
25	055124	Shroud Seal - Short	4	56	057013	Engine Mount	4
26	055125	Shroud Seal - Long	2	57	057014c	Washer	10
27	055335	Hose Clamp	2	58	057015	Exhaust Pipe	1
		(One req'd. before Serial #2167)		59	057019	Engine Mount - Right Rear	1
28	055576	Air Cleaner Spacer	2		650487	HHCS 5/16 x 1	1
29	059269	Ether Cylinder Gasket	1		650630	HHCS 7/16NF x 1	1
30	055577	Pump Sprocket (16T)	1		650631	HHCS 5/8 x 4	1
31	055982	Square Key 3/8 x 3/8 x 1	1			(1) 5/16 HN - (1) PW - (1) LW	
32	056042B	Gear Pump	1			(1) 7/16 LW	
33	056086	90° Male Elbow	2			(1) 5/8 HN - (1) LW	
		(Used after Serial #2034)		60	057023	Engine Mount - Left Rear	1
	054856	90° Male Adapter Elbow	2		650487	HHCS 5/16 x 1	1
		(Used before Serial #2035)			650630	HHCS NF x 1	1
34	056197B-E	Hydrostatic Pump	1		650631	HHCS 5/8 x 4	1
		(Used after Serial #1438)				(1) 5/16 HN - (1) PW - (1) LW	
	054199E	Hydrostatic Pump	1			(1) 7/16 LW	
		(Used before Serial #1439)				(1) 5/8 HN - (1) LW	
35	056198	Piston Pump - Rear	1	61	057026	Radiator Hose - Lower 22"	1
		(Used after Serial #1438)		62	057027	Pump Support	1
	056041F	Piston Pump	1		650486	HHCS 5/16 x 3/4	1
		(Used before Serial #1439)				(2) 5/16 HN - (1) PW - (2) LW	
36	056199B	Piston Pump - Front	1	63	057030	Injector To Tank Hose - 55"	1
		(Used after Serial #1438)		64	057080	Pump Mount - Lower	1
	056043G	Piston Pump	1	65	057081	Pump Mount - Upper	1
		(Used before Serial #1439)		66	057082	Pump Mount Spacer	1
37	056200	Hydraulic Tube	1	67	057543	Resistor Mount	1
38	056481	Engine (Complete)	1		650486	HHCS 5/16 x 3/4	1
39	056815	Oil Pressure Sender Unit	1			(1) 5/16 LW	

HL4400 - ENGINE (PERKINS)

Ref. No.	Part No.	Part Name	No. Req.	Ref. No.	Part No.	Part Name	No. Req.
68	057545	Resistor - 10 OHM	1	78	059451	Muffler Support	1
	650660	BHMS #632 x 3/8	2			(Used after Serial #2166)	
		(2) #632HN - (2) #6 ILW			650488	HHCS 3/8 x 3/4	1
69	058475	Quick Start Valve Assembled	1			(1) 3/8 LW	
70	058477	Ether Atomizer	1	79	061166	Hose Clamp	1
71	058525	Elbow	1	80	061577	Screw	5
72	058642	Fan Shroud	1	81	071414	Ether Tube	1
	650486	HHCS 5/16 x 3/4	2	82	650576	Pipe Plug - 1/2"	1
	650315	STWHS 1/4 x 1/2	4	83	650685	45° Street Elbow - 1/2"	1
		(2) 5/16 PW - (2) LW		84	660018	90° Street Elbow - 1/8"	1
73	058646	Fan Guard	1				
		(3) 1/4 HN - (3) PW - (3) LW					
74	058756D	Oil Cooler	1				
		(Used after Serial #2034)					
	054203D	Oil Cooler	1				
		(Used before Serial #2035)					
75	058802	Drain To Cooler Hose	1				
		(Used after Serial #2034)					
	054957	Oil Cooler Hose - 16"	1				
		(Used before Serial #2035)					
76	058805	Cooler Clamp	4				
		(Used after Serial #2034)					
77	058994	Pivot Arm	2				
		(Used after Serial #2166)					
	655012	Cotter Pin 1/8 x 1-3/4	2				
	650528	HHCS 3/8 x 2	2				
		(2) 3/8 HN					
	054823	Pivot Arm	2				
		(Used before Serial #2167)					

- A** To order Fitting O-Ring, specify part #055896.
- B** To service Hydraulic Pump, see pages 34-36.
- C** For replacement, order part #059450.
- D** For Oil Cooler and Hydraulic Plumbing after Serial #1685, see pages 29-30.
- E** To order Seal Kit, specify part #055220 for Serial #1000 through 1438 -- part #058531 after Serial #1438.
- F** For replacement, order part #056198.
- G** For replacement, order part #056199.
- * For replacement of Fan order part #061714.

