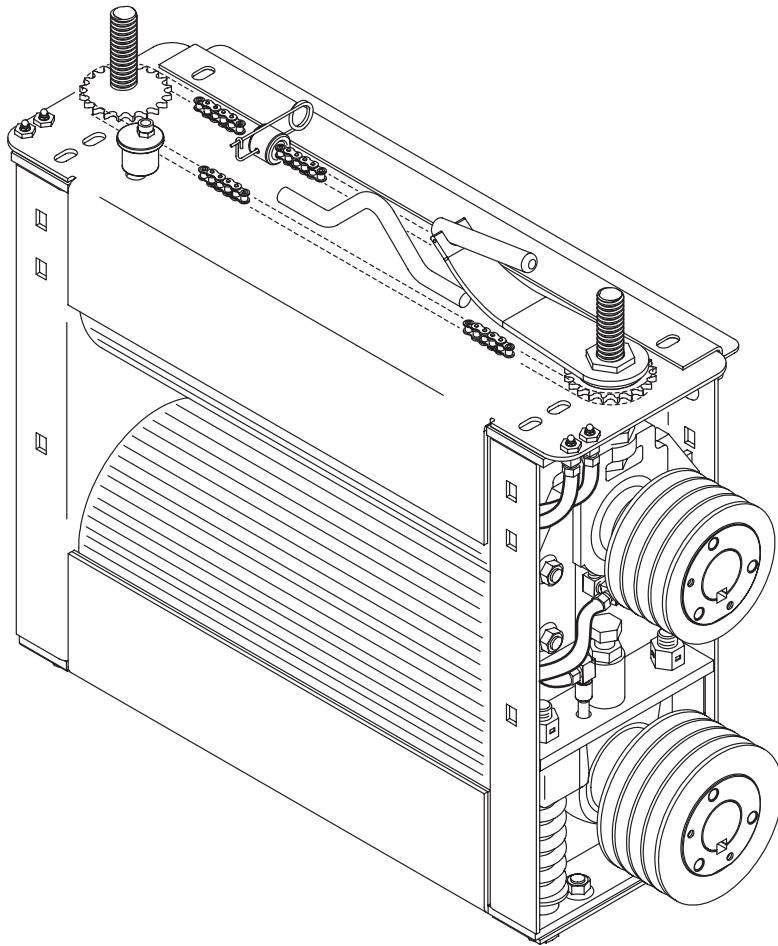


Form No.
908161

CP1005 CP1205 Crop Processor



PARTS MANUAL

GEHL® AGRICULTURE

Introduction

When ordering service parts, specify the correct part number, full description, quantity required, the unit model number and serial number.

The serial number for the CP1000 is on the top surface of the crop processor housing.

“Right” and “Left” are determined from a position standing behind the unit and facing the direction of travel. From this position the Drive Sheaves are on the “Right” side.

GEHL® Company reserves the right to make changes or improvements in the design or construction of any part of the unit without incurring the obligation to install such changes on any previously delivered units.

Refer to the abbreviations table located on this page for the various fastener descriptions. Standard attaching hardware torque values are also provided on the inside back cover.

In the exploded view parts list, Reference Numbers may have additional information following the Reference Number.

A Tear Drop symbol will indicate an application of a “wet” product such as oil, and the number inside the Tear Drop will correspond to the description in the Parts List.

Also, a number inside a hexagon will be the torque value required, in foot pounds, on the associated Reference Number. Items shown in the parts list that do not have Reference Numbers are shown for reference purposes only and are NOT available for purchase.

Unless otherwise specified, all Cap Screws or Bolts are Grade 5, cadmium or zinc plated; Hexagon Nuts for Grade 5 Screws or Bolts are Grade B; Hexagon Nuts for other Screws or Bolts are Grade A.

NOTE: *The following abbreviations may be used herein:*

AR	– As Required
ASSD	– Assembled
ASSY	– Assembly
CB	– Carriage Bolt
CCW	– Counterclockwise

CP	– Cotter Pin
CS	– Cap Screw (Hexagon Head)
CTR	– Center
CW	– Clockwise
DEG	– Degree
DIA	– Diameter
FCS	– Flanged Cap Screw
FHMS	– Flat Head Machine Screw
FL	– Flanged
FLN	– Flanged Lock Nut (Hexagon)
FLS	– Flanged Lock Screw (Hexagon)
FW	– Flat Washer
GA	– Gauge
GR	– Grade
HD	– Hard or Head
HN	– Hex Nut
INCL	– Includes
JT	– Joint
LG	– Large
LH	– Left Hand
LN	– Lock Nut
LW	– Lock Washer
M	– Metric
MM/mm	– Millimeter
NF	– National Fine
PB	– Plow Bolt
PTO	– Power Take Off
RH	– Right Hand
RHMS	– Round Head Machine Screw
RPM	– Revolutions Per Minute
RT	– Right
SERR	– Serrated
SHCS	– Socket Head Cap Screw
SHSS	– Socket Head Set Screw
SN	– Serial Number or Slotted Nut
SQ	– Square
T	– Tooth or Teeth
TFS	– Thread Forming Screw
THMS	– Truss Head Machine Screw
THRD	– Thread
WLDMT	– Weldment
#	– Number



– Torque Required in foot pounds



– Indicates a Fluid Application

TABLE OF CONTENTS

Introduction	Inside Front Cover
Table Of Contents	1
Decal Locations	2
Mill Components	4-7
Mill Drive	8-9
Mill Storage Stand	10
Alphabetical Index	11
Numerical Index	12
Standard Hardware Torque specifications	Inside Back Cover

DECAL LOCATIONS

GENERAL INFORMATION

Decal location information is provided to assist in the proper selection and application of new decals, in the event the original decals become damaged or the machine is repainted. Refer to the listing for the illustration reference number, part number, description and quantity of each decal. Refer to the illustration below for replacement locations.

NOTE: Refer to the SAFETY Chapter of the Operator's Manual for the specific information provided on all of the various Safety Decals.

PAINT NOTICE

Use this list to order paint for refinishing:

906315	One Gal. AG Red
902872	One Qt. Light Grey
906316	6 (12 oz. Spray Cans) AG Red
902874	6 (12 oz. Spray Cans) Light Grey

NEW DECAL APPLICATION

Surfaces MUST be free from dirt, dust, grease and other foreign material before applying the new Decal. To apply,

remove the smaller portion of the decal backing paper and apply this part of the exposed adhesive backing to the clean surface while maintaining proper position and alignment. Peel the other portion of the backing paper off slowly while applying hand pressure to smooth out the Decal surface.

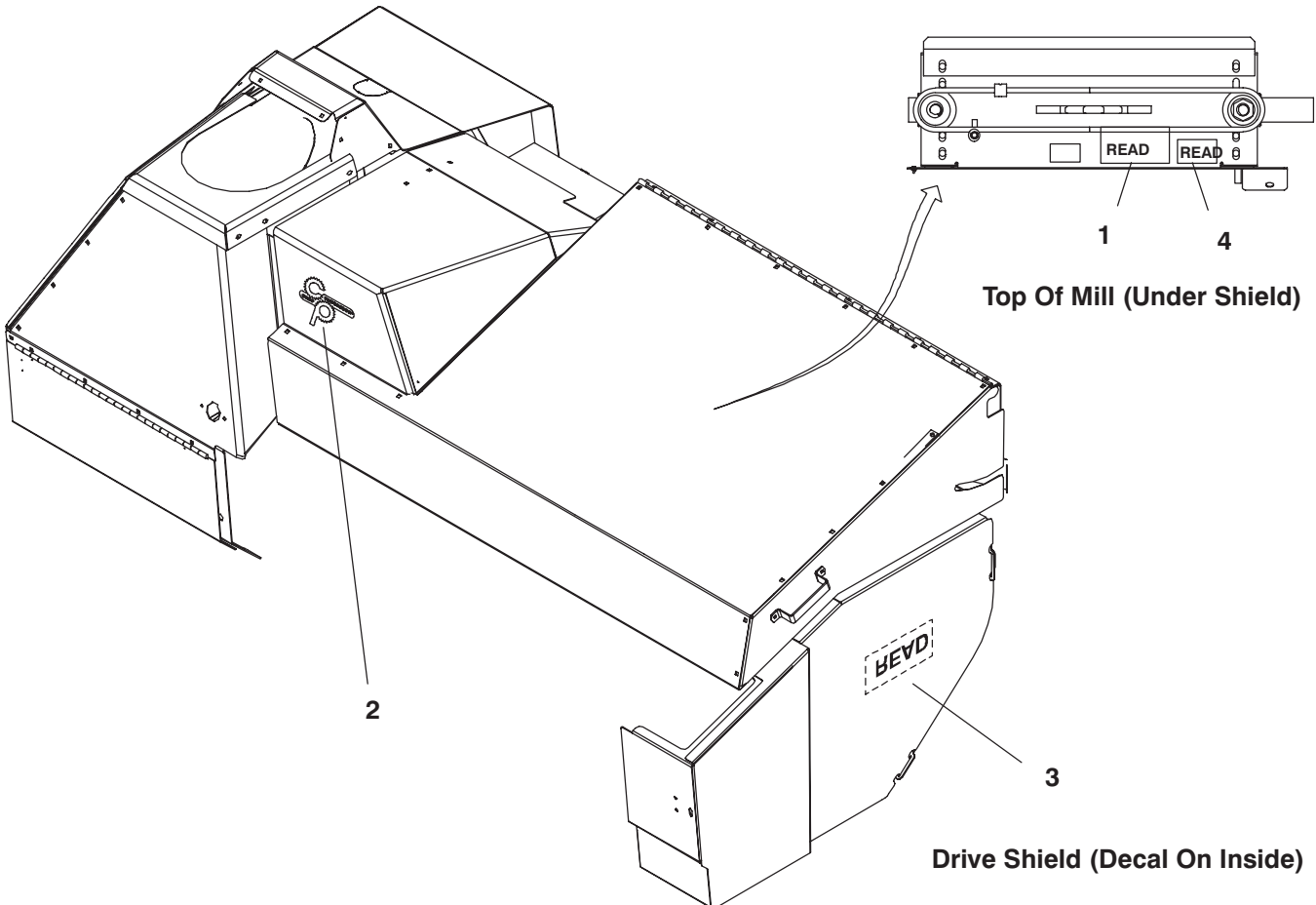


CAUTION

ALWAYS follow safety precautions on decals. Replace the decals if they are damaged, or if the unit is repainted. If repainting, **BE SURE** that all applicable decals are affixed to your unit.

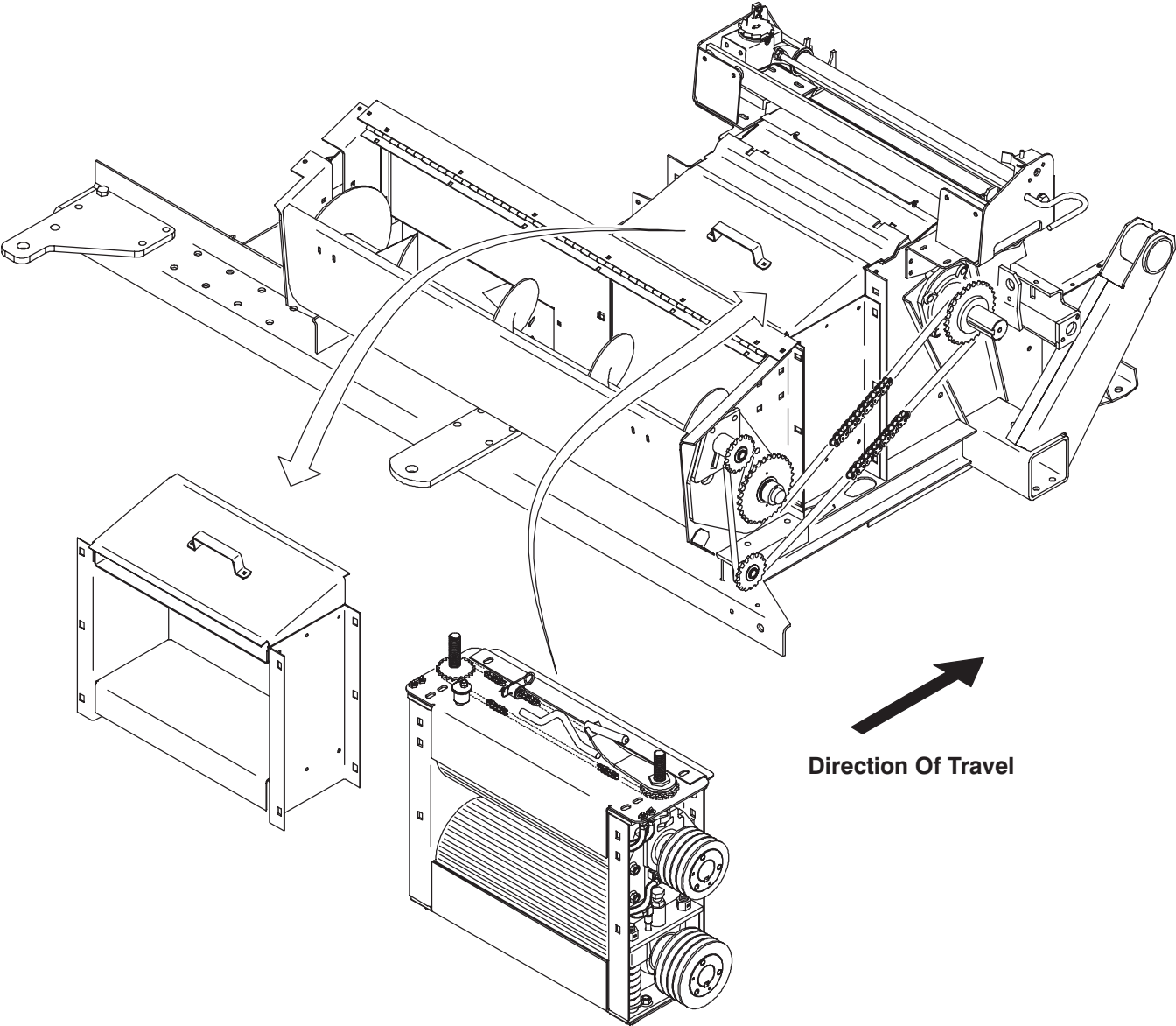
For replacement, order CP1005/1205 decals individually. The CP1005/1205 uses the following decals:

Ref. No.	Part No.	Description & Quantity
1	093376	WARNING - Hands Out
2	158749	Crop Processor
3	154281	Belt Routing
4	158168	Roll Adjustment



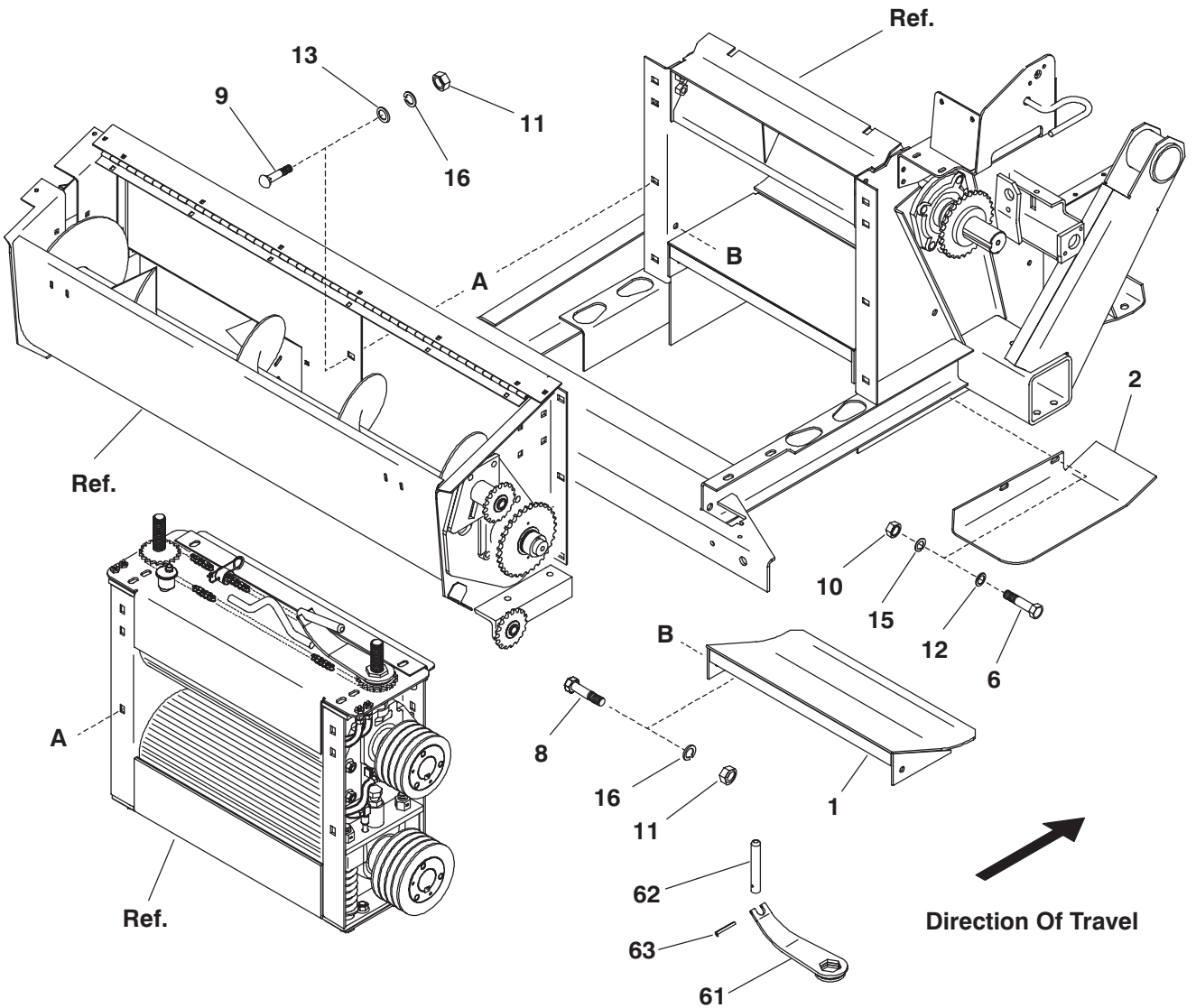
INTENTIONALLY BLANK

CP1005/1205 - MILL COMPONENTS



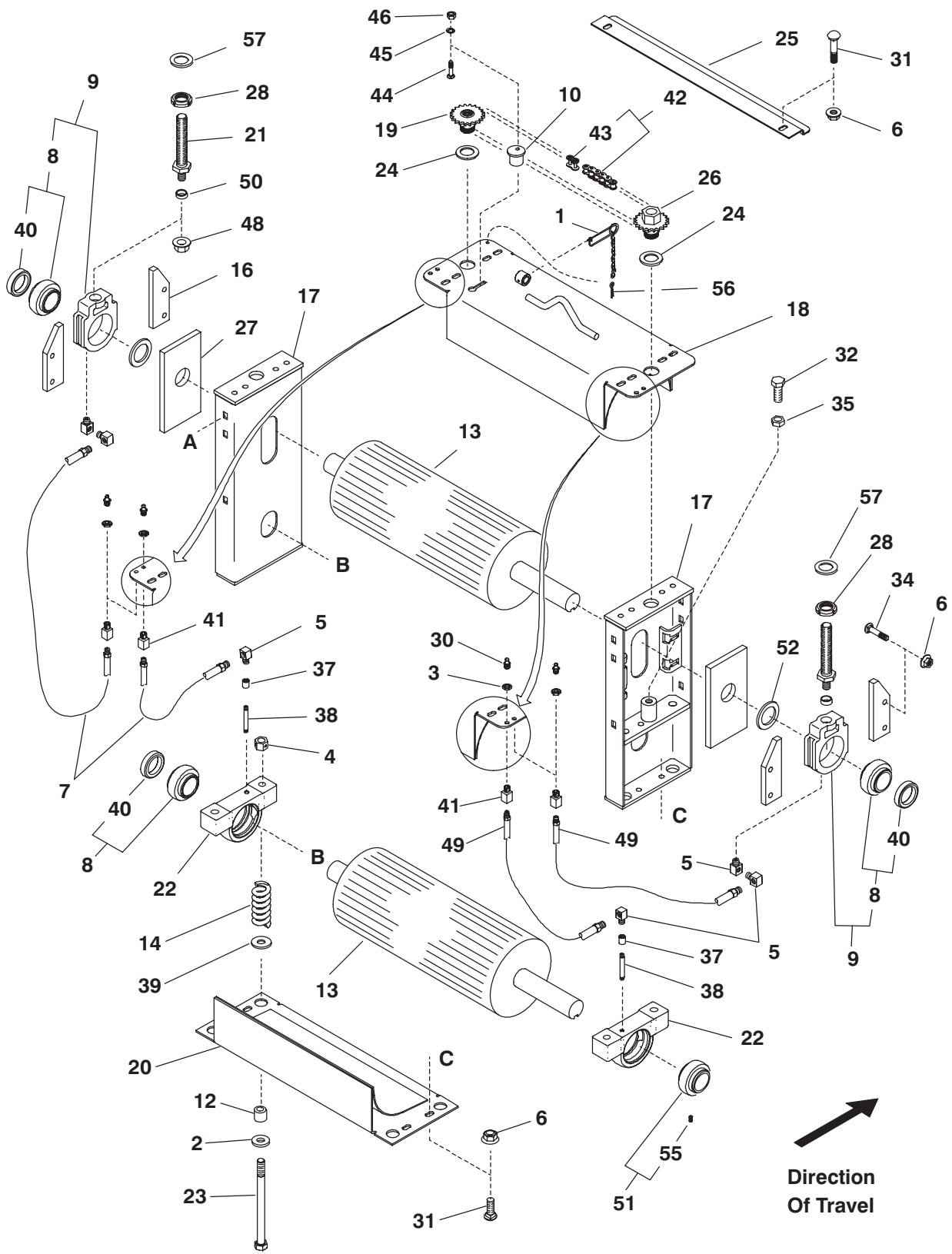
Direction Of Travel

CP1005/1205 - MILL COMPONENTS



Ref. No.	Part No.	Description	Qty. Req.	Ref. No.	Part No.	Description	Qty. Req.
01	156140	PAN ASSY (CP1205)	1	12	654006	FW 3/8	2
	154323	PAN ASSY (CP1005)	1	13	654009	FW 1/2	8
02	158316	SHIELD	1	15	654026	LW 3/8	2
06	650490	CS 3/8X1	2	16	654030	LW 1/2	10
08	650495	CS 1/2X1-1/4	2	61	154726	WRENCH	1
09	650527	CB 1/2X1-1/4	8	62	154111	HANDLE/WRENCH	1
10	653010	HN 3/8	2	63	057634	PIN/SPRING	1
11	653018	HN 1/2	10				

CP1005/1205 - MILL COMPONENTS

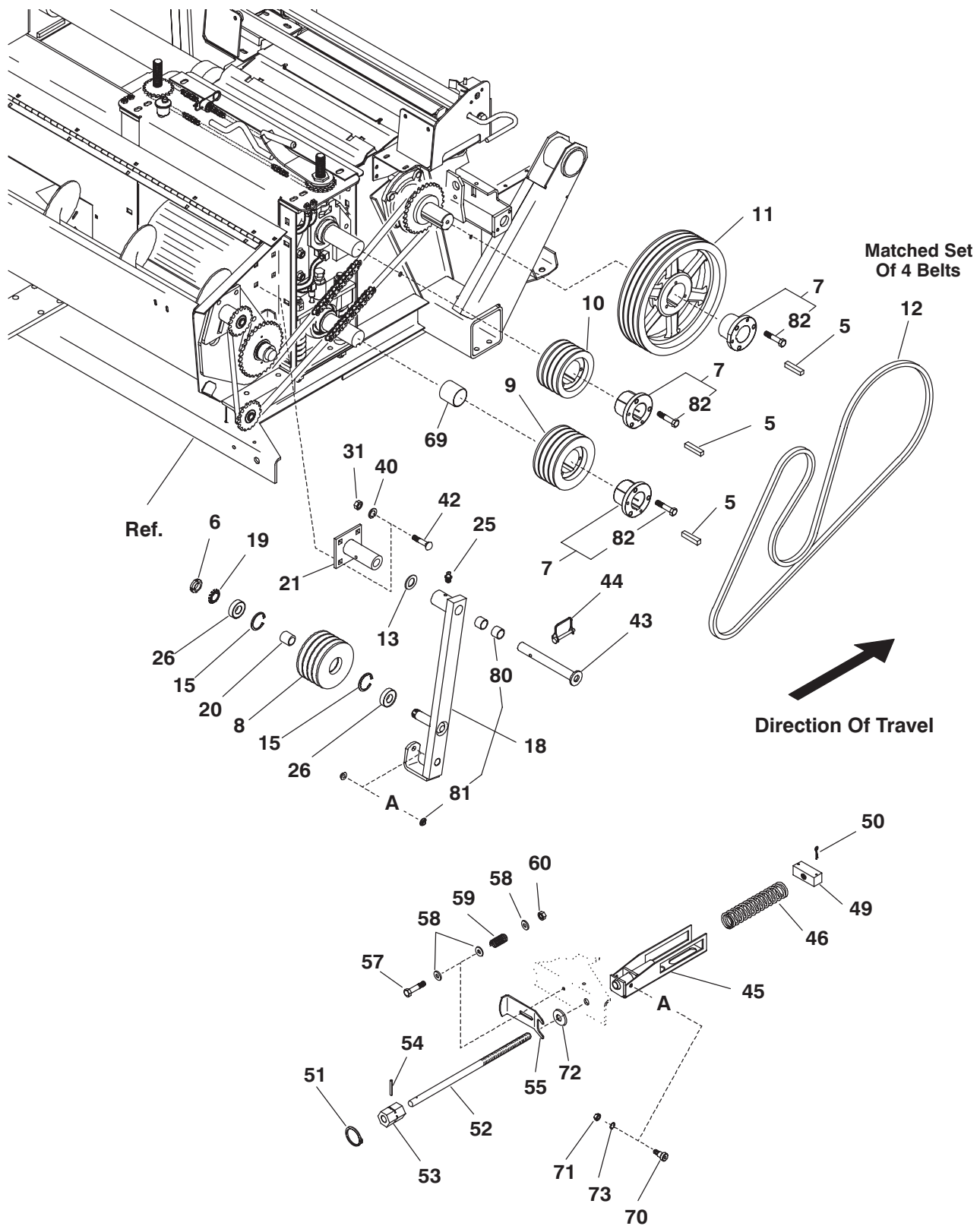


CP1005/1205 - MILL COMPONENTS

Ref. No.	Part No.	Description	Qty. Req.	Ref. No.	Part No.	Description	Qty. Req.
01	094731	PIN/SAFETY ASSY	1	26	158172	NUT/ADJUST ASSY	1
02	H6149	FW 25/32	4	27	154660	COVER/MILL	2
03	061848	NUT/BULKHEAD ADAPTER	4	28	155529	NUT/LOCK	2
04	064331	LN 3/4	4	30	570019	FITTING/GREASE	4
05	065624	ADAPTER/RIGHT ANGLE	6	31	651386	CB SN 1/2X1-1/4	12
06	081374	FLN 1/2	20	32	650649	CS 3/4X2	2
07	091907	HOSE/ASSY 18"	2	34	650834	CB 1/2X1-1/2	8
08	094737	BEARING/BALL	3	35	650857	HJN 3/4	2
09	094712	BEARING/TAKE-UP	2	37	660025	COUPLING/PIPE 1/8	2
10	094713	TIGHTENER/CHAIN	1	38	113043	NIPPLE/PIPE 1/8X2	2
12	144377	HUB	4	39	654014	FW 3/4	4
13	145167	ROLL/22.0 MILL (CP1005)	2	40	094752	COLLAR/BEARING	3
	144490	ROLL/26.5 MILL (CP1205)	2	41	061847	ADAPTER/BULKHEAD	4
14	145496	SPRING/COMPRESSION	4	42	145923	CHAIN #41X122 LINKS (CP1005)	1
16	153355	BAR/SLIDE	4		144488	CHAIN #41X140 LINKS (CP1205)	1
17	157377	SIDE/MILL ASSY	2	43	500043	LINK/CONNECTOR	1
18	158480 _a	COVER/TOP ASSY (CP1005)	1	44	082231	CB 3/8X2-1/4	1
	158481 _a	COVER/TOP ASSY (CP1205)	1	45	654026	LW 3/8	1
19	158173	NUT/ASSY	1	46	653010	HN 3/8	1
20	157433	COVER/BOTTOM (CP1005)	1	48	094739	FLN 3/4	2
	155639	COVER/BOTTOM (CP1205)	1	49	157296	HOSE/GREASE	2
21	153802	ROD/ASSY	2	50	094685	SPACER/BEARING	2
22	153870	HOUSING/BEARING	2	51	145909	BEARING	1
23	157578	BOLT/MILL	4	52	155214	WASHER/NYLON	AR
24	153955	WASHER/THRUST	2	55	650342	SHSS 5/16X1/2	1
25	157748	SEAL/MILL (CP1000)	1	56	655041	CP 3/16X3/4	1
	157804	SEAL/MILL (CP1200)	1	57	119045	WASHER/HARDENED THRUST	2

a) Includes 093376 Warning Decal.

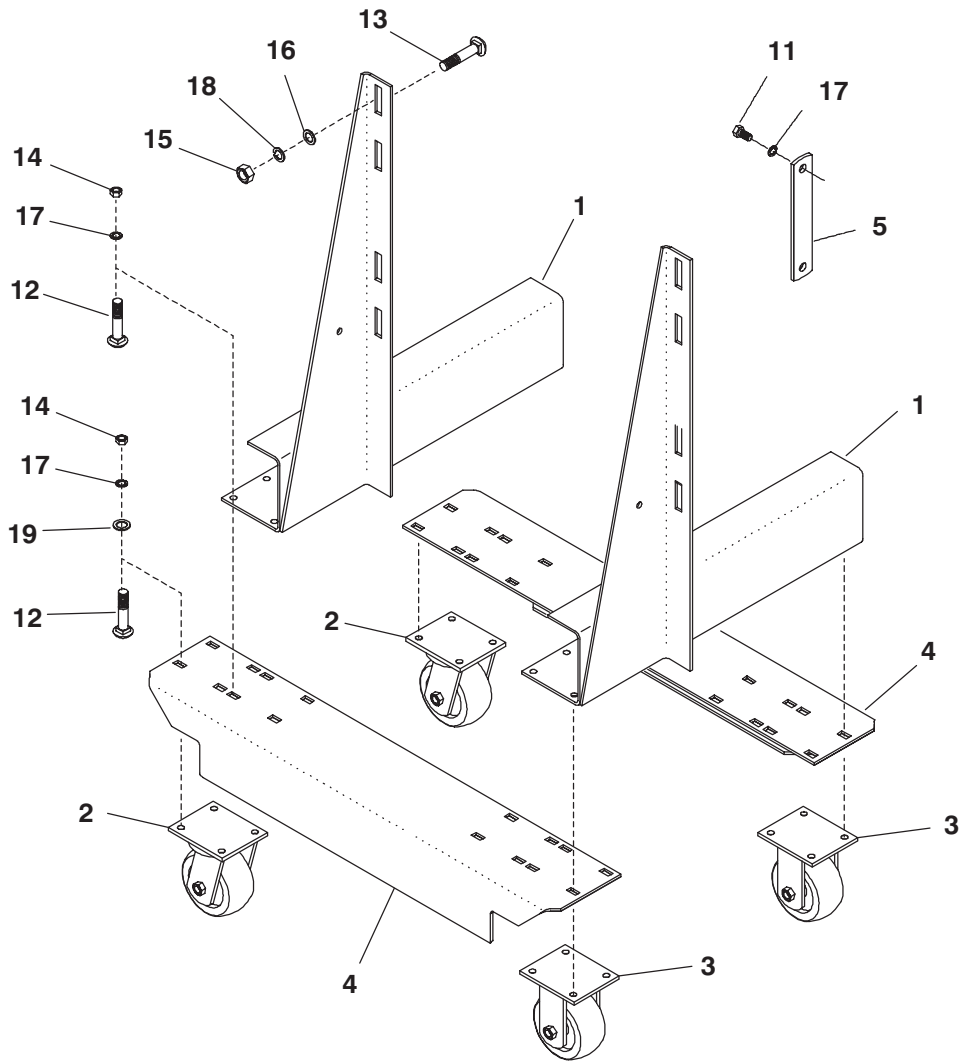
CP1005/1205 - MILL DRIVE



CP1005/1205 - MILL DRIVE

Ref. No.	Part No.	Description	Qty. Req.	Ref. No.	Part No.	Description	Qty. Req.
05	145043	KEY/SQUARE 1/2X2-1/2	3	45	158206	GUIDE/SPRING	1
06	520000	NUT/LOCK	1	46	153883	SPRING	1
07	144100	BUSHING	3	49	154163	NUT/TENSION	1
08	144952	SHEAVE/IDLER	1	50	655022	CP 3/16X1-3/4	2
09	144956	SHEAVE/6.55	1	51	056640	RING/RETAINING	1
10	144962	SHEAVE/5.75	1	52	158219	SCREW/TENSION	1
11	144964	SHEAVE/13.95	1	53	153988	LOCKNUT	1
12	145881	BELT/SET	1	54	050270	PIN/SPRING	2
13	128015	FW 1-1/32	6	55	158236	LOCK/KNOB	1
15	056287	RING/RETAINING	2	57	650492	CS 3/8X2-1/2	1
18	153990	ARM/ASSY	1	58	654006	FW 3/8	3
19	065730	WASHER/BEARING	1	59	A162	SPRING/ROLLER GUARD	1
20	144466	SPACER/BEARING	1	60	071703	LN 3/8	1
21	145785	SUPPORT/PIVOT ASSY	1	69	155693	TUBE	1
25	570004	FITTING/GREASE	1	70	154234	SCREW/SHOULDER	2
26	613113	BEARING/BALL	2	71	653010	HN 3/8	2
31	653018	HN 1/2	4	72	654014	FW 3/4	1
40	654030	LW 1/2	4	73	654026	LW 3/8	2
42	650527	CB 1/2X1-1/4	4	80	049337	BUSHING/BRONZE	2
43	145868	SHAFT/PIVOT ASSY	1	81	154635	BEARING/FLANGED	2
44	066452	PIN/LOCK	1	82	650491	CS 3/8X1-1/4	9

CP1005/1205 - MILL STORAGE STAND



Ref. No.	Part No.	Description	Qty. Req.	Ref. No.	Part No.	Description	Qty. Req.
01	144938	SUPPORT/MILLASSY	2	13	650834	CB 1/2X1-1/2	4
02	145053	CASTER/SWIVEL	2	14	653010	HN 3/8	24
03	145054	CASTER/RIGID	2	15	653018	HN 1/2	4
04	154520	TIE	2	16	654009	FW 1/2	4
05	145215	BAR/LOCK	1	17	654026	LW 3/8	26
11	650490	CS 3/8X1	2	18	654030	LW 1/2	4
12	650786	CB 3/8X1-1/4	24	19	654006	FW 3/8	8

Index

M

Mill

- Components, 4–7
- Decal Locations, 2
- Drive, 8–9
- Storage Stand, 10







CP1005/1205 - NUMERICAL INDEX

Part No.	Page No.	Ref. No.	Part No.	Page No.	Ref. No.	Part No.	Page No.	Ref. No.	Part No.	Page No.	Ref. No.
A162	09	59	144938	10	01	155214	07	52	650527	05	09
H6149	07	02	144952	09	08	155529	07	28	650527	09	42
049337	09	80	144956	09	09	155639	07	20	650649	07	32
050270	09	54	144962	09	10	155693	09	69	650786	10	12
056287	09	15	144964	09	11	156140	05	01	650834	07	34
056640	09	51	145043	09	05	157296	07	49	650834	10	13
057634	05	63	145053	10	02	157377	07	17	650857	07	35
061847	07	41	145054	10	03	157433	07	20	651386	07	31
061848	07	03	145167	07	13	157578	07	23	653010	05	10
064331	07	04	145215	10	05	157748	07	25	653010	07	46
065624	07	05	145496	07	14	157804	07	25	653010	09	71
065730	09	19	145785	09	21	158168	02	04	653010	10	14
066452	09	44	145868	09	43	158172	07	26	653018	05	11
071703	09	60	145881	09	12	158173	07	19	653018	09	31
081374	07	06	145909	07	51	158206	09	45	653018	10	15
082231	07	44	145923	07	42	158219	09	52	654006	05	12
091907	07	07	153355	07	16	158236	09	55	654006	09	58
093376	02	01	153802	07	21	158316	05	02	654006	10	19
094685	07	50	153870	07	22	158480	07	18	654009	05	13
094712	07	09	153883	09	46	158481	07	18	654009	10	16
094713	07	10	153955	07	24	158749	02	02	654014	07	39
094731	07	01	153988	09	53	500043	07	43	654014	09	72
094737	07	08	153990	09	18	520000	09	06	654026	05	15
094739	07	48	154111	05	62	570004	09	25	654026	07	45
094752	07	40	154163	09	49	570019	07	30	654026	09	73
113043	07	38	154234	09	70	613113	09	26	654026	10	17
119045	07	57	154281	02	03	650342	07	55	654030	05	16
128015	09	13	154323	05	01	650490	05	06	654030	09	40
144100	09	07	154520	10	04	650490	10	11	654030	10	18
144377	07	12	154635	09	81	650491	09	82	655022	09	50
144466	09	20	154660	07	27	650492	09	57	655041	07	56
144488	07	42	154726	05	61	650495	05	08	660025	07	37
144490	07	13									

TORQUE SPECIFICATIONS

NOTE: Use these torque values when tightening **GEHL** hardware (excluding: Locknuts and Self-tapping, Thread Forming and Sheet Metal Screws) unless specified otherwise.

All torque values are in Lb-Ft except those marked with an * which are Lb-In
(For metric torque value Nm, multiply Lb-Ft value by 1.355 or Lb-In value by 0.113)

Unified National Thread	Grade 2 		Grade 5 		Grade 8 	
	Dry	Lubed	Dry	Lubed	Dry	Lubed
8-32 8-36	19* 20*	14* 15*	30* 31*	22* 23*	41* 43*	31* 32*
10-24 10-32	27* 31*	21* 23*	43* 49*	32* 36*	60* 68*	45* 51*
1/4-20 1/4-28	66* 76*	50* 56*	9 10	75* 86*	12 14	9 10
5/16-18 5/16-24	11 12	9	17 19	13 14	25	18 20
3/8-16 3/8-24	20 23	15 17	30 35	23 25	45 50	35
7/16-14 7/16-20	32 36	24 27	50 55	35 40	70 80	55 60
1/2-13 1/2-20	50 55	35 40	75 90	55 65	110 120	80 90
9/16-12 9/16-18	70 80	55 60	110 120	80 90	150 170	110 130
5/8-11 5/8-18	100 110	75 85	150 180	110 130	220 240	170 180
3/4-10 3/4-16	175 200	130 150	260 300	200 220	380 420	280 320
7/8-9 7/8-14	170 180	125 140	430 470	320 360	600 660	460 500
1-8 1-14	250 270	190 210	640 710	480 530	900 1000	680 740
Metric Course Thread	Grade 8.8 		Grade 10.9 		Grade 12.9 	
	Dry	Lubed	Dry	Lubed	Dry	Lubed
M6-1	8	6	11	8	13.5	10
M8-1.25	19	14	27	20	32.5	24
M10-1.5	37.5	28	53	39	64	47
M12-1.75	65	48	91.5	67.5	111.5	82
M14-2	103.5	76.5	145.5	108	176.5	131
M16-2	158.5	117.5	223.5	165.5	271	200

GEHL®

Gehl Company 143 Water Street, P.O. Box 179, West Bend, WI 53095-0179, U.S.A.