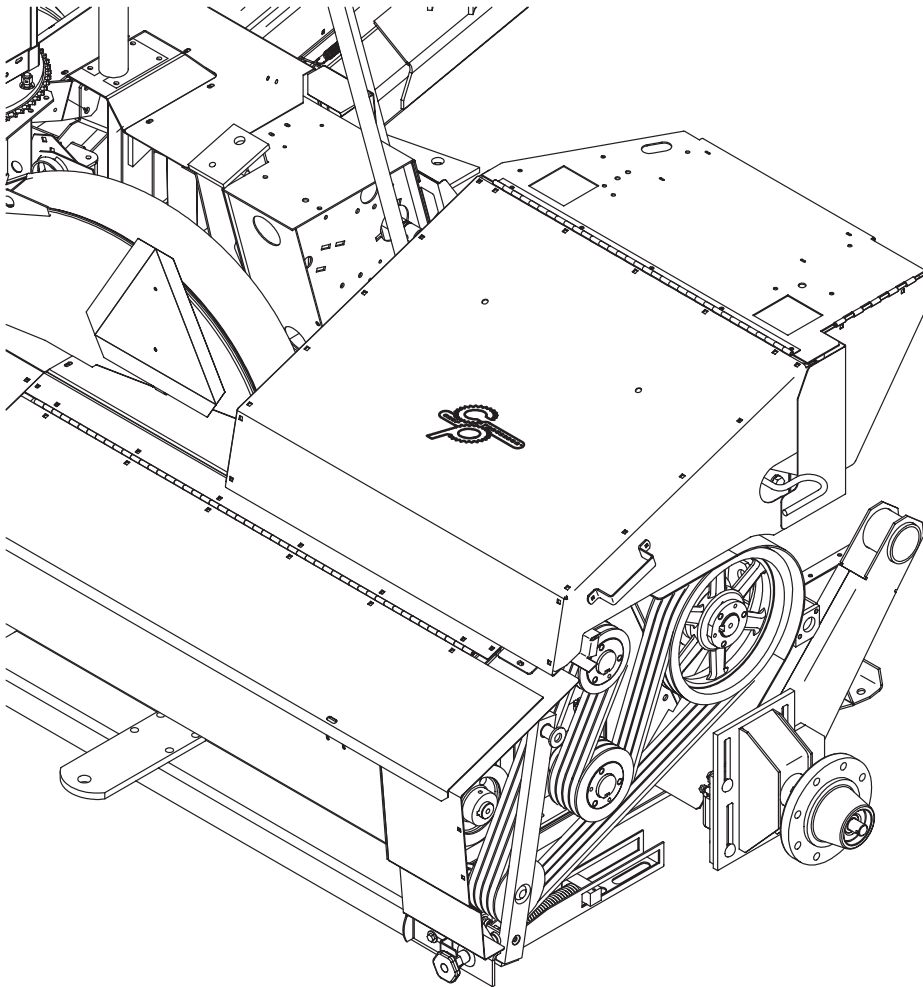


Form No.  
908029

# CP1000

## Crop Processor



# PARTS MANUAL

**GEHL® AGRICULTURE**

## Introduction

When ordering service parts, specify the correct part number, full description, quantity required, the unit model number and serial number.

The serial number for the CP1000 is on the top surface of the crop processor housing.

“Right” and “Left” are determined from a position standing behind the unit and facing the direction of travel. From this position the Drive Sheaves are on the “Right” side.

GEHL® Company reserves the right to make changes or improvements in the design or construction of any part of the unit without incurring the obligation to install such changes on any previously delivered units.

Refer to the abbreviations table located on this page for the various fastener descriptions. Standard attaching hardware torque values are also provided on the inside back cover.

In the exploded view parts list, Reference Numbers may have additional information following the Reference Number.

A Tear Drop symbol will indicate an application of a “wet” product such as oil, and the number inside the Tear Drop will correspond to the description in the Parts List.

Also, a number inside a hexagon will be the torque value required, in foot pounds, on the associated Reference Number. Items shown in the parts list that do not have Reference Numbers are shown for reference purposes only and are NOT available for purchase.

Unless otherwise specified, all Cap Screws or Bolts are Grade 5, cadmium or zinc plated; Hexagon Nuts for Grade 5 Screws or Bolts are Grade B; Hexagon Nuts for other Screws or Bolts are Grade A.

**NOTE:** *The following abbreviations may be used herein:*

AR	– As Required
ASSD	– Assembled
ASSY	– Assembly
CB	– Carriage Bolt
CCW	– Counterclockwise

CP	– Cotter Pin
CS	– Cap Screw (Hexagon Head)
CTR	– Center
CW	– Clockwise
DEG	– Degree
DIA	– Diameter
FCS	– Flanged Cap Screw
FHMS	– Flat Head Machine Screw
FL	– Flanged
FLN	– Flanged Lock Nut (Hexagon)
FLS	– Flanged Lock Screw (Hexagon)
FW	– Flat Washer
GA	– Gauge
GR	– Grade
HD	– Hard or Head
HN	– Hex Nut
INCL	– Includes
JT	– Joint
LG	– Large
LH	– Left Hand
LN	– Lock Nut
LW	– Lock Washer
M	– Metric
MM/mm	– Millimeter
NF	– National Fine
PB	– Plow Bolt
PTO	– Power Take Off
RH	– Right Hand
RHMS	– Round Head Machine Screw
RPM	– Revolutions Per Minute
RT	– Right
SERR	– Serrated
SHCS	– Socket Head Cap Screw
SHSS	– Socket Head Set Screw
SN	– Serial Number or Slotted Nut
SQ	– Square
T	– Tooth or Teeth
TFS	– Thread Forming Screw
THMS	– Truss Head Machine Screw
THRD	– Thread
WLDMT	– Weldment
#	– Number



– Torque Required in foot pounds



– Indicates a Fluid Application

# TABLE OF CONTENTS

Introduction .....	Inside Front Cover
Table of Contents .....	1
Decal Locations .....	2
Mill Components .....	4-7
Mill Drive .....	8-9
Mill Storage Stand .....	10
Alphabetical Index .....	11
Numerical Index .....	12
Standard Hardware Torque specifications .....	Inside Back Cover

# DECAL LOCATIONS

## GENERAL INFORMATION

Decal location information is provided to assist in the proper selection and application of new decals, in the event the original decals become damaged or the machine is repainted. Refer to the listing for the illustration reference number, part number, description and quantity of each decal provided in the Kit. Refer to the illustration below for replacement locations.

To insure proper selection of the correct replacement decals, compare all of the various closeup location drawings to your machine before starting to refinish the unit. Then circle each shown decal (applicable to your machine) while checking off its part number in the listing. After you have verified all the decals needed for replacement, place any extra unnecessary decals aside for disposal.

**NOTE:** Refer to the SAFETY Chapter of the Operator's Manual for the specific information provided on all of the various Safety Decals furnished in the Decal Kit(s).

PAINT NOTICE	
Use this list to order paint for refinishing:	
906315	One Gal. AG Red
902872	One Qt. Light Grey
906316	6 (12 oz. Spray Cans) AG Red
902874	6 (12 oz. Spray Cans) Light Grey

## NEW DECAL APPLICATION

Surfaces **MUST** be free from dirt, dust, grease and other foreign material before applying the new Decal. To apply, remove the smaller portion of the decal backing paper and apply this part of the exposed adhesive backing to the clean surface while maintaining proper position and alignment. Peel the other portion of the backing paper off slowly while applying hand pressure to smooth out the Decal surface.

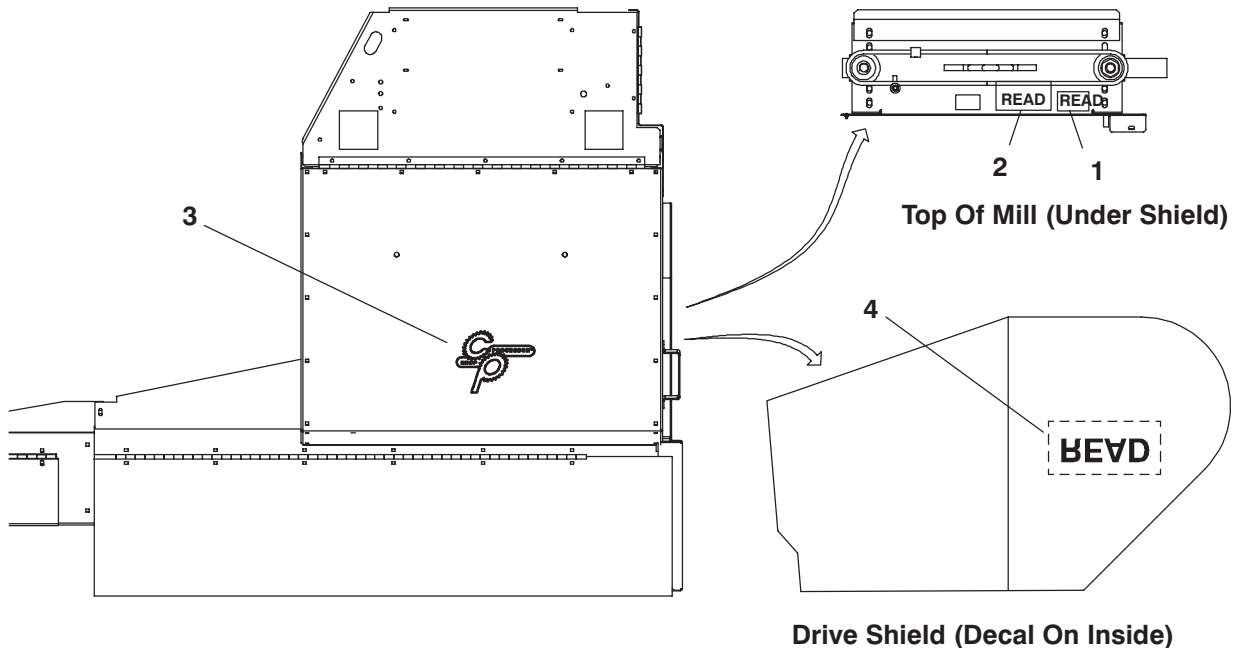


## CAUTION

**ALWAYS** follow safety precautions on decals. Replace the decals if they are damaged, or if the unit is repainted. If repainting, **BE SURE** that all applicable decals are affixed to your unit.

The CP1000 Decals are not available in a complete kit. For replacement, order decals individually. The CP1000 uses the following decals:

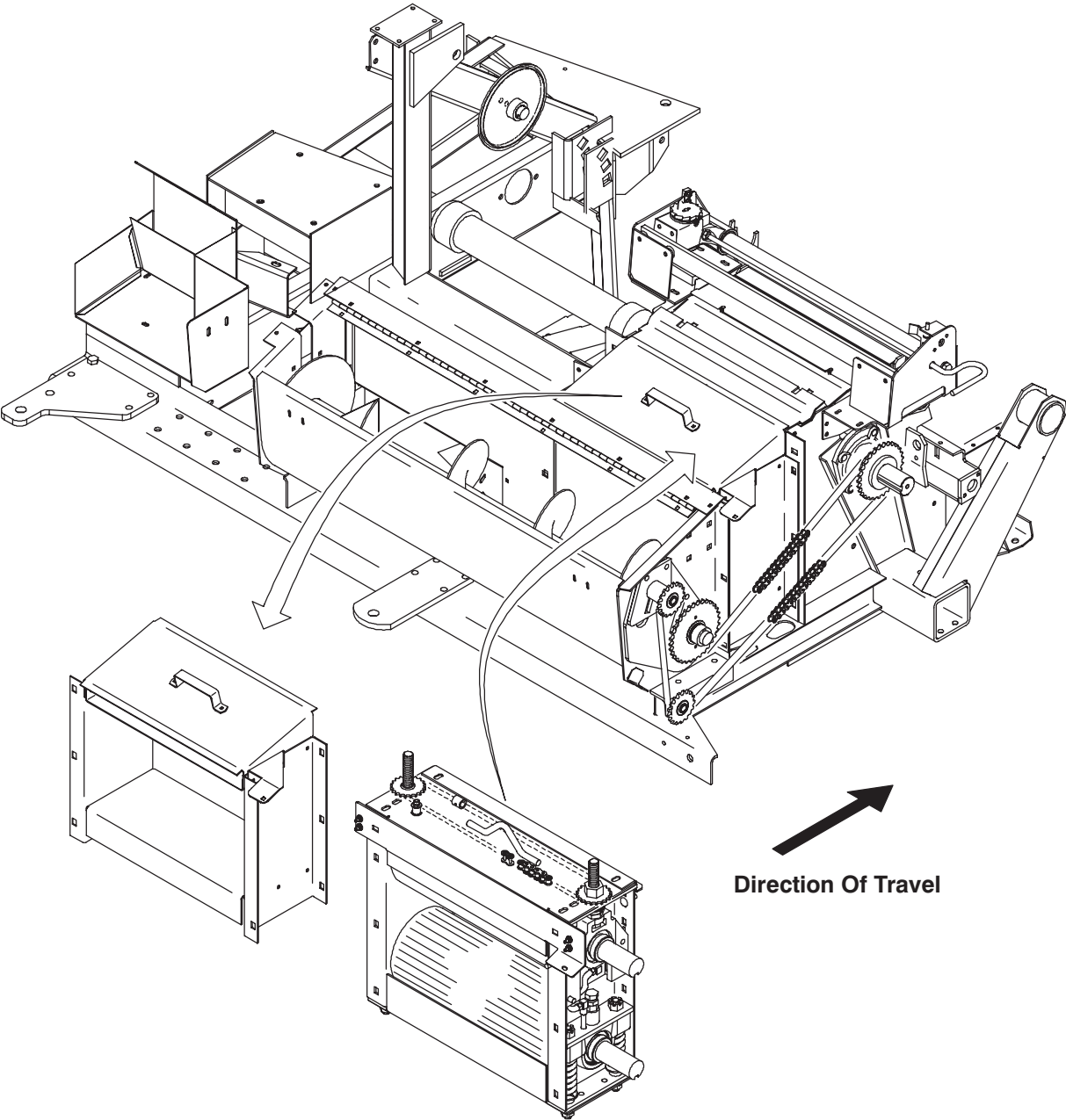
Ref. No.	Part No.	Description & Quantity
1	094502	Notice
2	094503	DANGER - Crusher Roll
3	145048	Crop Processor
4	154281	Belt Routing



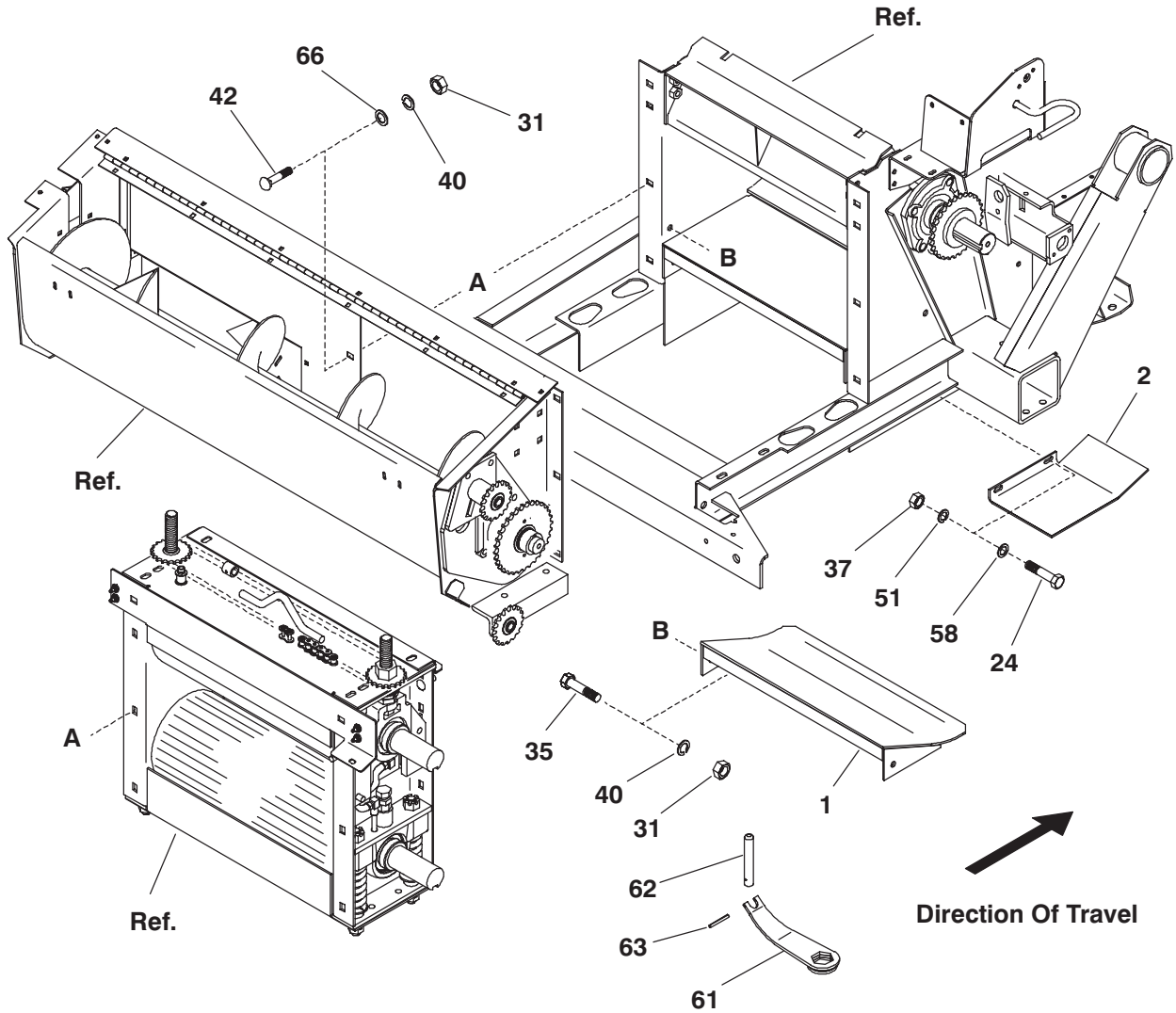
**INTENTIONALLY BLANK**

**CP1000 - MILL COMPONENTS**

---

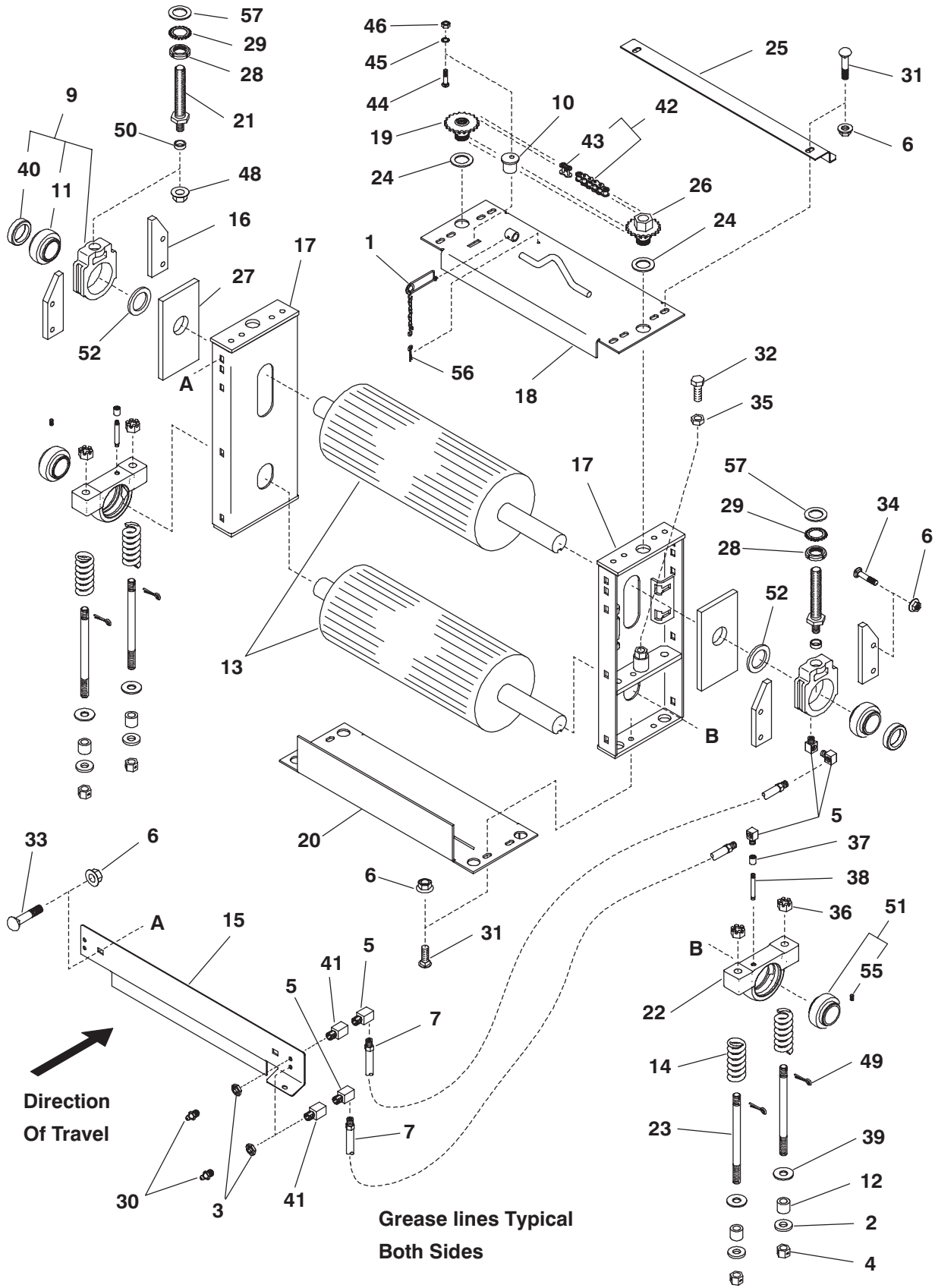


# CP1000 - MILL COMPONENTS



Ref. No.	Part No.	Description	Qty. Req.	Ref. No.	Part No.	Description	Qty. Req.
01	154323	PAN ASSY .....	1	42	650527	CB 1/2X1-1/4 .....	8
02	154669	SHIELD .....	1	51	654026	LW 3/8 .....	2
24	650490	CS 3/8X1 .....	2	58	654006	FW 3/8 .....	2
31	653018	HN 1/2 .....	10	61	154726	WRENCH .....	1
35	650495	CS 1/2X1-1/4 .....	2	62	154111	HANDLE/WRENCH .....	1
37	653010	HN 3/8 .....	2	63	074090	PIN/SPRING .....	1
40	654030	LW 1/2 .....	10	66	654009	FW 1/2 .....	8

# CP1000 - MILL COMPONENTS

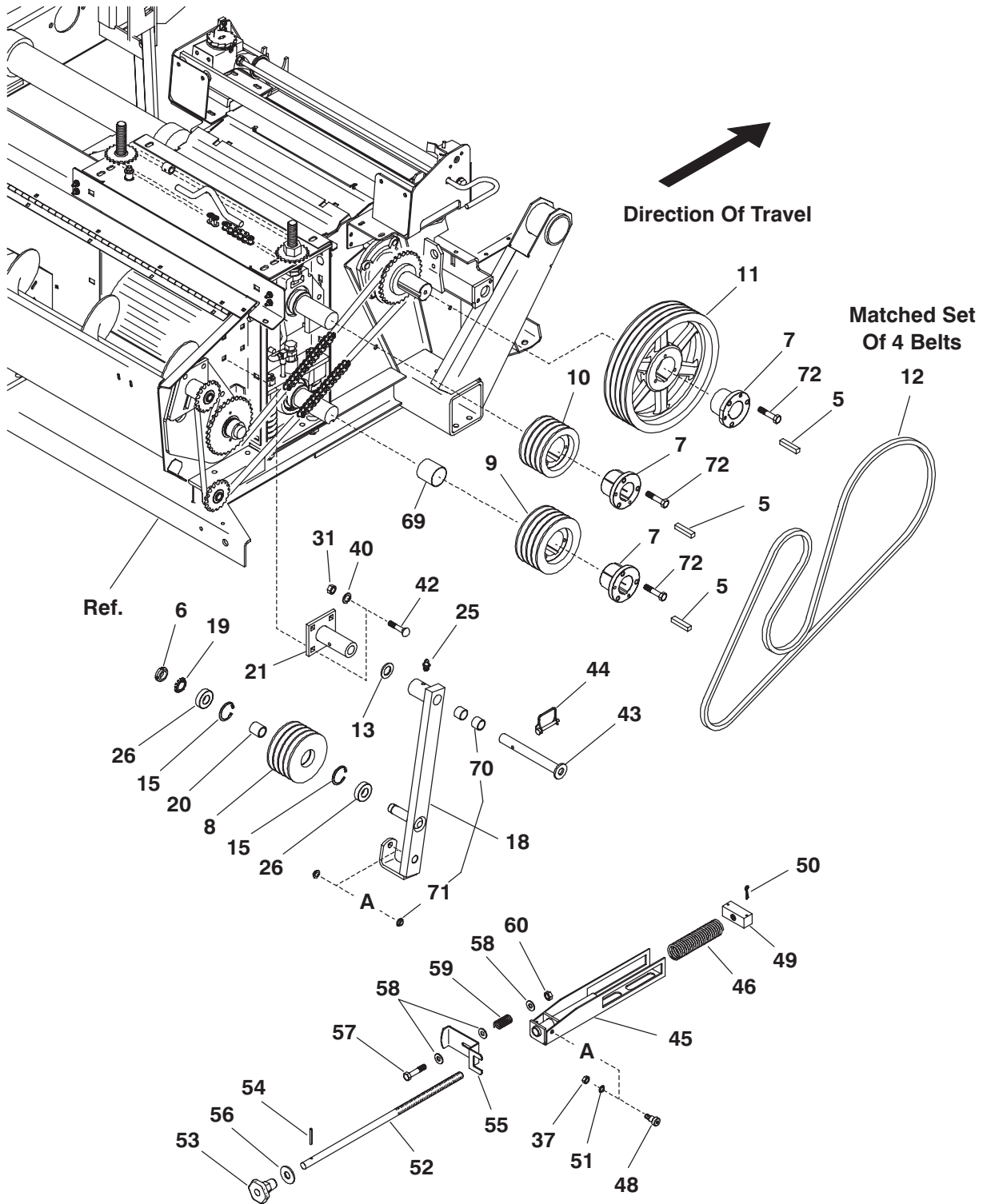




## CP1000 - MILL COMPONENTS

Ref. No.	Part No.	Description	Qty. Req.	Ref. No.	Part No.	Description	Qty. Req.
01	094731	PIN/SAFETY ASSY .....	1	29	520165	WASHER/LOCK .....	2
02	H6149	FW 25/32 .....	4	30	570019	FITTING/GREASE .....	4
03	061848	NUT/BULKHEAD ADAPTER .....	4	31	651386	CB SN 1/2X1-1/4 .....	12
04	064331	LN 3/4 .....	4	32	650649	CS 3/4X2 .....	2
05	065624	ADAPTER/RIGHT ANGLE .....	10	33	650811	CB 1/2X1 .....	2
06	081374	FLN 1/2 .....	22	34	650834	CB 1/2X1-1/2 .....	8
07	091907	HOSE/ASSY 18" .....	4	35	650857	HJN 3/4 .....	2
09	094712	BEARING/TAKE-UP .....	2	36	653087	HN SLTD HVY 3/4 .....	4
10	094713	TIGHTENER/CHAIN .....	1	37	660025	COUPLING/PIPE 1/8 .....	2
11	094737	BEARING/BALL .....	2	38	113043	NIPPLE/PIPE 1/8X2 .....	2
12	144377	HUB .....	4	39	654014	FW 3/4 .....	4
13	145167	ROLL/22.00MILL .....	2	40	094752	COLLAR/BEARING .....	2
14	145496	SPRING/COMPRESSION .....	4	41	061847	ADAPTER/BULKHEAD .....	4
15	145989	COVER/MILL REAR .....	1	42	145923	CHAIN #41X122 LINKS .....	1
16	153355	BAR/SLIDE .....	4	43	500043	LINK/CONNECTOR .....	1
17	153688	SIDE/MILL ASSY .....	2	44	082231	CB 3/8X2-1/4 .....	1
18	153708	COVER/TOP ASSY .....	1	45	654026	LW 3/8 .....	1
19	153712	NUT/ASSY .....	1	46	653010	HN 3/8 .....	1
20	153718	BOTTOM/MILL .....	1	48	094739	FLN 3/4 .....	2
21	153802	ROD/ASSY .....	2	49	655046	CP 5/32X1-3/4 .....	4
22	153870	HOUSING/BEARING .....	2	50	094685	SPACER/BEARING .....	2
23	153941	ROD/MILL .....	4	51	145909	BEARING .....	2
24	153955	WASHER/THRUST .....	2	52	155214	WASHER .....	AR
25	153969	SEAL/MILL .....	1	55	650342	SHSS 5/16X1/2 .....	2
26	153998	NUT/ADJUST ASSY .....	1	56	655041	CP 3/16X3/4 .....	1
27	154660	COVER/MILL .....	2	57	119045	WASHER .....	2
28	520164	NUT/LOCK .....	2				

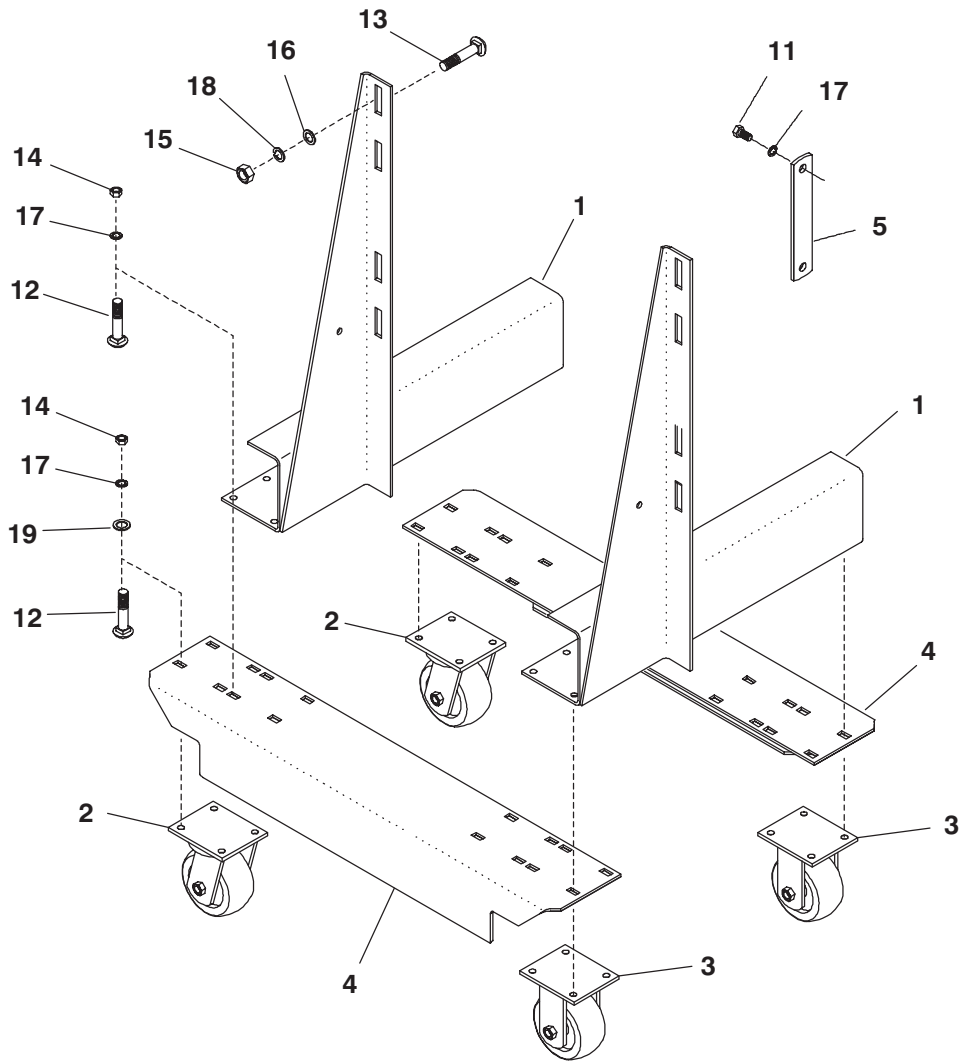
# CP1000 - MILL DRIVE



## CP1000 - MILL DRIVE

Ref. No.	Part No.	Description	Qty. Req.	Ref. No.	Part No.	Description	Qty. Req.
05	145043	KEY/SQUARE 1/2X2-1/2	3	44	066452	PIN/LOCK	1
06	520000	NUT/LOCK	1	45	154269	GUIDE/SPRING ASSY	1
07	144100	BUSHING	3	46	C133	SPRING/EQUALIZER	1
08	144952	SHEAVE/IDLER	1	48	154234	SCREW/SHOULDER	2
09	144956	SHEAVE/6.55	1	49	154163	NUT/TENSION	1
10	144962	SHEAVE/5.75	1	50	655022	CP 3/16X1-3/4	2
11	144964	SHEAVE/13.95	1	51	654026	LW 3/8	2
12	145881	BELT/SET	1	52	154493	SCREW/TENSION	1
13	128015	FW 1-1/32	6	53	154607	KNOB	1
15	056287	RING/RETAINING	2	54	050270	PIN/SPRING	2
18	153990	ARM/ASSY	1	55	154491	LOCK/KNOB	1
19	065730	WASHER/BEARING	1	56	654014	FW 3/4	1
20	144466	SPACER/BEARING	1	57	650492	CS 3/8X2-1/2	1
21	145785	SUPPORT/PIVOT ASSY	1	58	654006	FW 3/8	3
25	570004	FITTING/GREASE	1	59	A162	SPRING/ROLLER GUARD	1
26	613113	BEARING/BALL	2	60	071703	LN 3/8	1
31	653018	HN 1/2	4	69	155566	TUBE	1
37	653010	HN 3/8	2	70	049337	BUSHING/BRONZE	2
40	654030	LW 1/2	4	71	154635	BEARING/FLANGED	2
42	650527	CB 1/2X1-1/4	4	72	650491	CS 3/8X1-1/4	9
43	145868	SHAFT/PIVOT ASSY	1				

# CP1000 - MILL STORAGE STAND



Ref. No.	Part No.	Description	Qty. Req.	Ref. No.	Part No.	Description	Qty. Req.
01	144938	SUPPORT/MILLASSY .....	2	13	650834	CB 1/2X1-1/2 .....	4
02	145053	CASTER/SWIVEL .....	2	14	653010	HN 3/8 .....	24
03	145054	CASTER/RIGID .....	2	15	653018	HN 1/2 .....	4
04	154520	TIE .....	2	16	654009	FW 1/2 .....	4
05	145215	BAR/LOCK .....	1	17	654026	LW 3/8 .....	26
11	650490	CS 3/8X1 .....	2	18	654030	LW 1/2 .....	4
12	650786	CB 3/8X1-1/4 .....	24	19	654006	FW 3/8 .....	8

# Index

## M

### Mill

- Components, 4–7
- Decal Locations, 2
- Drive, 8–9
- Storage Stand, 10







# CP1000 - NUMERICAL INDEX

Part No.	Page No.	Ref. No.	Part No.	Page No.	Ref. No.	Part No.	Page No.	Ref. No.	Part No.	Page No.	Ref. No.
C133	09	46	144938	10	01	154163	09	49	650811	07	33
A162	09	59	144952	09	08	154234	09	48	650834	07	34
H6149	07	02	144956	09	09	154269	09	45	650834	10	13
049337	09	70	144962	09	10	154281	02	04	650857	07	35
050270	09	54	144964	09	11	154323	05	01	651386	07	31
056287	09	15	145043	09	05	154491	09	55	653010	05	37
057634	05	63	145048	02	03	154493	09	52	653010	07	46
061847	07	41	145053	10	02	154520	10	04	653010	09	37
061848	07	03	145054	10	03	154607	09	53	653010	10	14
064331	07	04	145167	07	13	154635	09	71	653018	05	31
065624	07	05	145215	10	05	154726	05	61	653018	09	31
065730	09	19	145496	07	14	154660	07	27	653018	10	15
066452	09	44	145785	09	21	154669	05	02	653087	07	36
071703	09	60	145868	09	43	154214	07	52	654006	05	58
081374	07	06	145881	09	12	500043	07	43	654006	09	58
082231	07	44	145909	51	07	520000	09	06	654006	10	19
091907	07	07	145923	42	07	520164	07	28	654009	05	66
094502	02	01	145989	07	15	520165	07	29	654009	10	16
094503	02	02	153355	07	16	570004	09	25	654014	07	39
094685	07	50	153688	07	17	570019	07	30	654014	09	56
094712	07	09	153708	07	18	613113	09	26	654026	05	51
094713	07	10	153712	07	19	650342	07	55	654026	07	45
094731	07	01	153718	07	20	650490	05	24	654026	09	51
094737	07	11	153802	07	21	650490	10	11	654026	10	17
094739	07	48	153870	07	22	650491	09	72	654030	05	40
094752	07	40	153941	07	23	650492	09	57	654030	09	40
113043	07	38	153955	07	24	650495	05	35	654030	10	18
119045	07	57	153969	07	25	650527	05	42	655022	09	50
128015	09	13	153990	09	18	650527	09	42	655041	07	56
144100	09	07	153998	07	26	650649	07	32	655046	07	49
144377	07	12	154111	05	62	650786	10	12	660025	07	37
144466	09	20									

# TORQUE SPECIFICATIONS

**NOTE:** Use these torque values when tightening **GEHL** hardware (excluding: Locknuts and Self-tapping, Thread Forming and Sheet Metal Screws) unless specified otherwise.

All torque values are in Lb-Ft except those marked with an \* which are Lb-In  
(For metric torque value Nm, multiply Lb-Ft value by 1.355 or Lb-In value by 0.113)

Unified National Thread	Grade 2 		Grade 5 		Grade 8 	
	Dry	Lubed	Dry	Lubed	Dry	Lubed
8-32	19*	14*	30*	22*	41*	31*
8-36	20*	15*	31*	23*	43*	32*
10-24	27*	21*	43*	32*	60*	45*
10-32	31*	23*	49*	36*	68*	51*
1/4-20	66*	50*	9	75*	12	9
1/4-28	76*	56*	10	86*	14	10
5/16-18	11	9	17	13	25	18
5/16-24	12		19	14		20
3/8-16	20	15	30	23	45	35
3/8-24	23	17	35	25	50	
7/16-14	32	24	50	35	70	55
7/16-20	36	27	55	40	80	60
1/2-13	50	35	75	55	110	80
1/2-20	55	40	90	65	120	90
9/16-12	70	55	110	80	150	110
9/16-18	80	60	120	90	170	130
5/8-11	100	75	150	110	220	170
5/8-18	110	85	180	130	240	180
3/4-10	175	130	260	200	380	280
3/4-16	200	150	300	220	420	320
7/8-9	170	125	430	320	600	460
7/8-14	180	140	470	360	660	500
1-8	250	190	640	480	900	680
1-14	270	210	710	530	1000	740
Metric Course Thread	Grade 8.8 		Grade 10.9 		Grade 12.9 	
	Dry	Lubed	Dry	Lubed	Dry	Lubed
M6-1	8	6	11	8	13.5	10
M8-1.25	19	14	27	20	32.5	24
M10-1.5	37.5	28	53	39	64	47
M12-1.75	65	48	91.5	67.5	111.5	82
M14-2	103.5	76.5	145.5	108	176.5	131
M16-2	158.5	117.5	223.5	165.5	271	200

# GEHL®

**Gehl Company** 143 Water Street, P.O. Box 179, West Bend, WI 53095-0179, U.S.A.