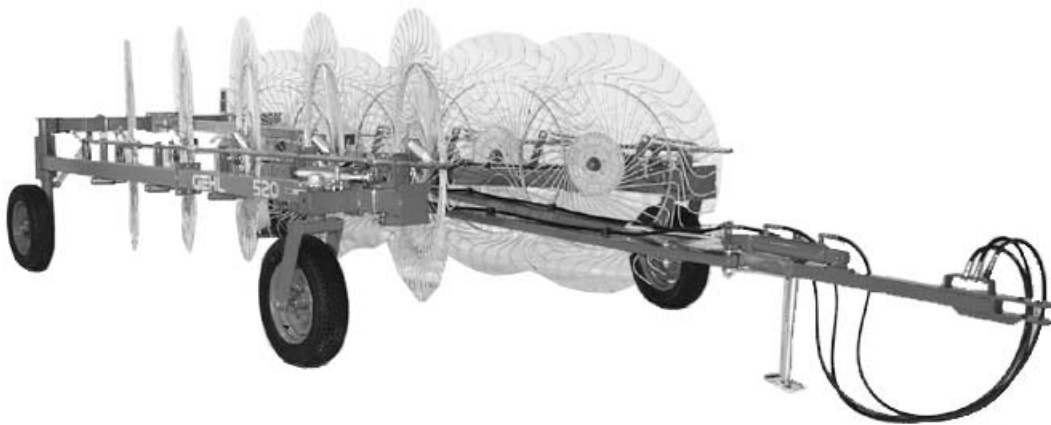


Form No.  
**909874**  
Replaces  
906157

# 520/522

## Finger Wheel Rakes



### PARTS MANUAL

**GEHL®** AGRICULTURE

## Introduction

When ordering service parts, specify the correct part number, full description, quantity required, the unit model number and serial number.

The model number and serial number for the Wheel Rake is on a decal located on the backside of the left side width adjustment wheel pivot frame member. “Right” and “left” are determined from a position standing at the rear of the unit facing the direction of travel.

GEHL® Company reserves the right to make changes or improvements in the design or construction of any part of the unit without incurring the obligation to install such changes on any previously delivered units.

**NOTE:** *On original tire replacement, company policy prohibits the sale of replacement tires for all GEHL machinery. Replacement wheel sets are available, and tire size information is called out with the wheel sets to facilitate replacement tire selection. ALL REPLACEMENT TIRES MUST BE PURCHASED LOCALLY.*

Refer to the abbreviations table located on this page for the various fastener descriptions. Standard attaching hardware torque values are also provided on the inside back cover.

In the exploded view parts list, reference numbers may have additional information following the reference number.

A tear drop symbol will indicate an application of a “wet” product such as oil, and the number inside the tear drop will correspond to the description in the parts list.

Also, a number inside a hexagon will be the torque value required, in foot pounds, on the associated reference number. Items shown in the parts list that do not have reference numbers are shown for reference purposes only and are not available for purchase.

Unless otherwise specified, all cap screws or bolts are Grade 5, zinc plated; hexagon nuts for grade 5 screws or bolts are Grade B; hexagon nuts for other screws or bolts are Grade A.

**NOTE:** *The following abbreviations may be used herein:*

A/R	– As Required
ASSD	– Assembled
ASSY	– Assembly
CB	– Carriage Bolt
CCW	– Counterclockwise
CP	– Cotter Pin
CS	– Cap Screw (Hexagon Head)
CTR	– Center
CW	– Clockwise
DEG	– Degree
DIA	– Diameter
FCS	– Flanged Cap Screw
FHMS	– Flat Head Machine Screw
FL	– Flanged
FLN	– Flanged Lock Nut (Hexagon)
FLS	– Flanged Lock Screw (Hexagon)
FW	– Flat Washer
GA	– Gauge
GR	– Grade
HD	– Hard or Head
HN	– Hex Nut
INCL	– Includes
JT	– Joint
LG	– Large
LH	– Left Hand
LW	– Lock Washer
LN	– Lock Nut
LW	– Lock Washer
M	– Metric
MM/mm	– Millimeter
NF	– National Fine
PB	– Plow Bolt
PTO	– Power Take Off
RH	– Right Hand
RHMS	– Round Head Machine Screw
RPM	– Revolutions Per Minute
RT	– Right
SERR	– Serrated
SHCS	– Socket Head Cap Screw
SHSS	– Socket Head Set Screw
SN	– Serial Number or Slotted Nut
SQ	– Square
T	– Tooth or Teeth
TFS	– Thread Forming Screw
THMS	– Truss Head Machine Screw
THRD	– Thread
WLDMT	– Weldment
#	– Number
	– Torque Required in foot pounds
	– Indicates a Fluid Application

# TABLE OF CONTENTS

Introduction .....	Inside Front Cover
Table of Contents .....	1
Decal Locations .....	2-3
Front Drawbar & Scissors .....	4-5
Side Frames .....	6-7
Rear Frame & Rear Drawbar .....	8-9
Pivot Wheel .....	10-13
Hydraulics .....	14-17
Arms & Wheels .....	18-19
Hitchjack .....	20
Options & Accessories .....	21-25
Safety Chain .....	21
Windrow Adjustment Kit .....	22-23
Center Wheel Kit .....	24-25
Alphabetical Index .....	26
Numerical Index .....	27
Standard Hardware Torque specifications .....	Inside Back Cover

# DECAL LOCATIONS

## GENERAL INFORMATION

Decal location information is provided to assist in the proper selection and application of new decals, in the event the original decals become damaged or the machine is repainted. Refer to the listing for the illustration reference number, part number, description and quantity of each decal provided in the kit. Refer to the appropriate illustrations for replacement locations.

**NOTE:** Refer to the *SAFETY* chapter of the *Operator's Manual* for the specific information provided on the various safety decals.

To ensure proper selection of replacement decals, compare the close-up photographs to your machine **BEFORE** starting to refinish the unit. Then, circle each pictured decal applicable to your machine while checking off its part number in the listing. After you have verified all of the decals needed for replacement, set aside unneeded decals for disposal.

## NEW DECAL APPLICATION

Surfaces **MUST** be free from dirt, dust, grease and other foreign material before applying the new decal. To apply a solid-formed decal, remove the smaller portion of the decal backing paper and apply this part of the exposed adhesive backing to the clean surface while maintaining proper position and alignment. Slowly peel off the other portion of the backing paper while applying hand pressure to smooth out the decal.



## CAUTION

**ALWAYS** read and follow safety precautions on decals. If decals become damaged, unreadable, or if the unit is repainted, the decals **MUST** be replaced. If repainting, **BE SURE** decals that apply to your machine are properly affixed to the unit.

### PAINT NOTICE

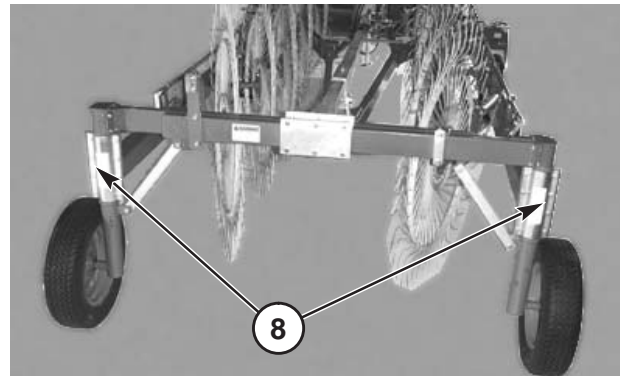
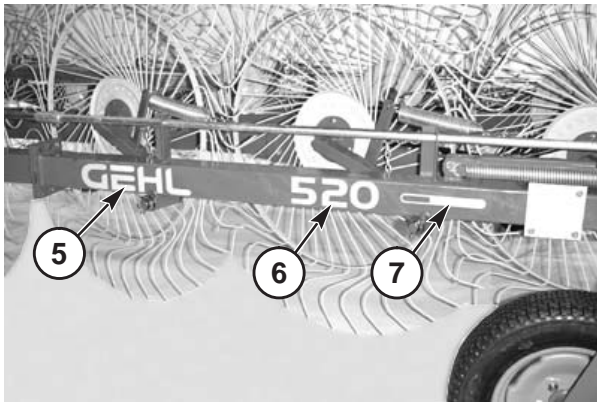
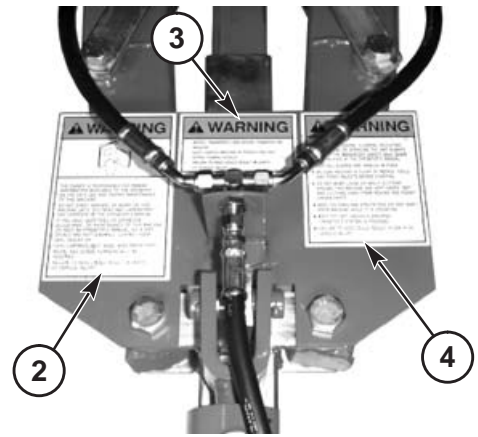
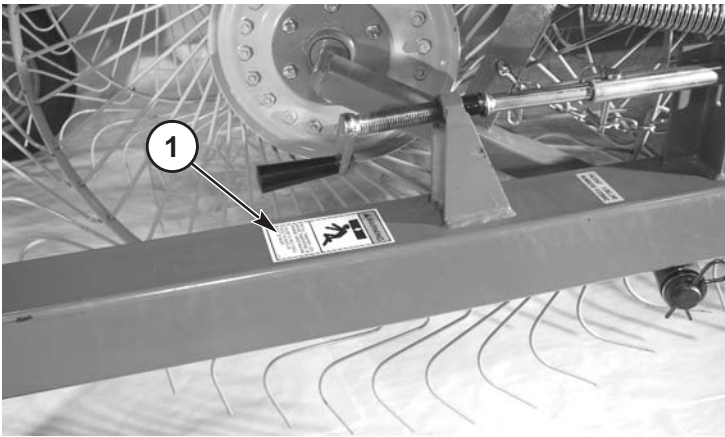
Use this list to order paint for refinishing:

906315	One Gal. Blaze Paint
901226	One Gal. Maize Paint
610239	6 (12 oz. Spray Cans) Blaze Paint
610240	6 (12 oz. Spray Cans) Maize Paint

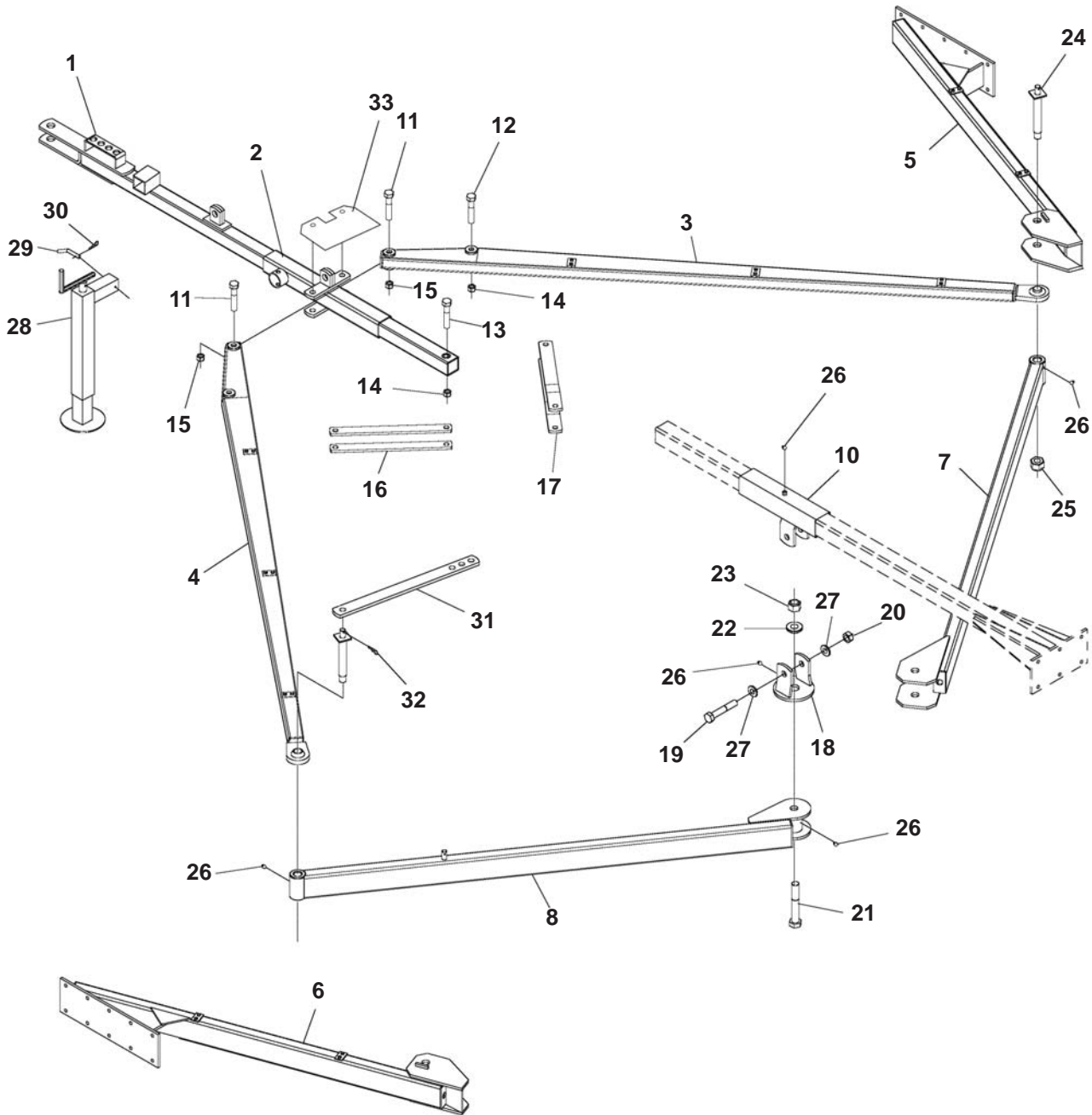
The decal set number for the WR520 and WR522 Finger Wheel Rakes is 130435.

The set includes the following:

Ref. No.	Part No.	Description & Quantity
1	093642	WARNING – Install Transport Lock (2 Places)
2	093367	WARNING – Operator's Responsibility & Read Manual
3	093381	WARNING – Install Transport Lock (2 Places)
4	093373	WARNING –General Safety
5	094913	GEHL (2 Places)
6	119410	520 – 520 Model Only (2 Places)
	094220	522 – 522 Model Only (2 Places)
7	112390	Color Bar (2 Places)
8	145216	Red Reflector Strip (2 Places)
9	145217	Amber Reflector Strip



# WR520/522 – FRONT DRAWBAR & SCISSORS

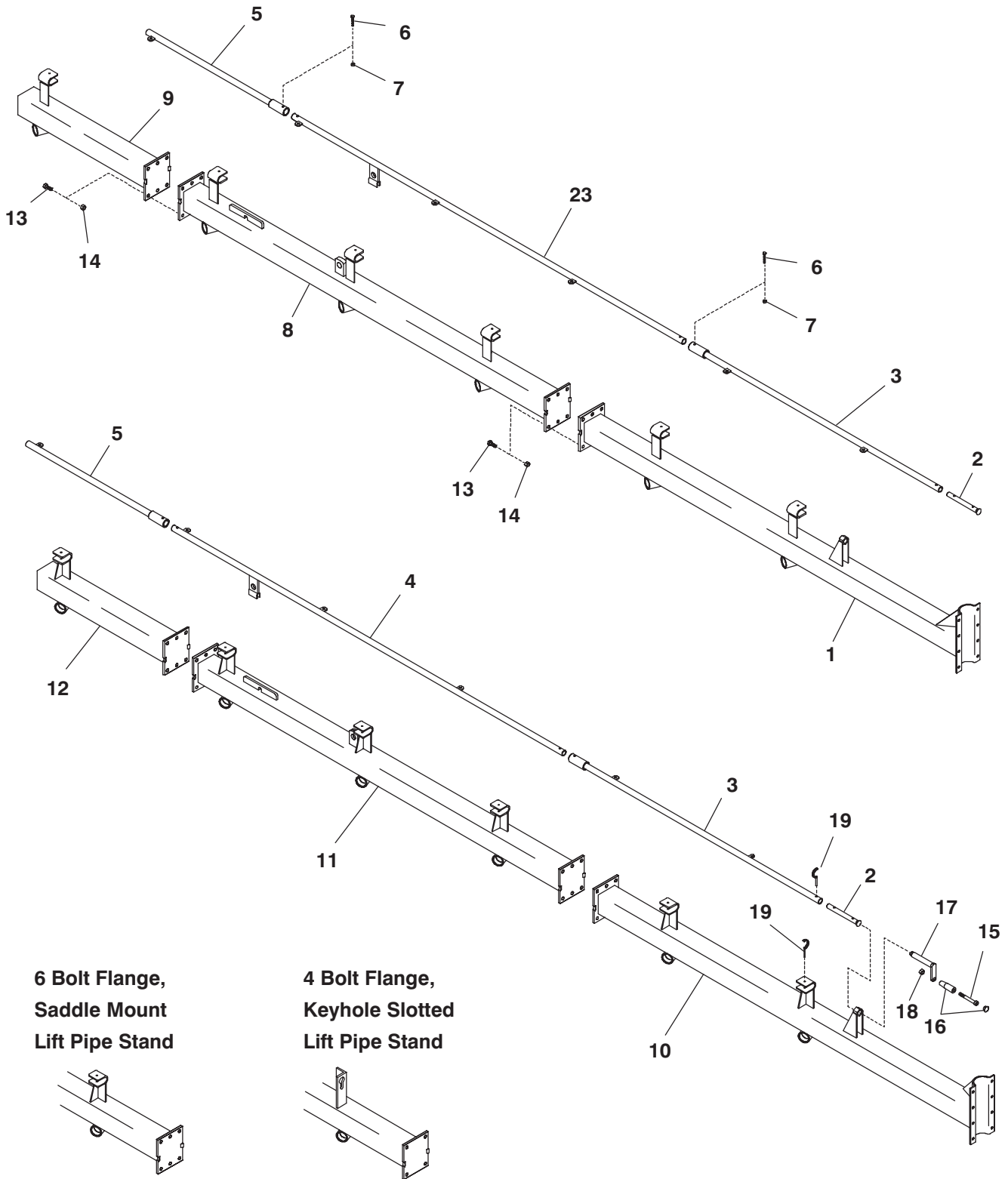


## WR520/522 – FRONT DRAWBAR & SCISSORS

Ref. No.	Part No.	Description	Qty. Req.	Ref. No.	Part No.	Description	Qty. Req.
01	613930	DRAWBAR .....	1	20	613967	LN M22 .....	2
02	613643	TUBE/DRAWBAR .....	1	21	656177	CS M27x170 .....	1
03	614038	FRONT FRAME R.H. ....	1	22	613963	SPACER/PIVOT .....	1
04	614037	FRONT FRAME L.H. ....	1	23	613011	NILN M24 .....	1
05	613651	ARM/RT .....	1	24	613667	PIN/COMBINATION .....	2
06	613650	ARM/LT .....	1	25	613682	NILN M24 .....	4
07	613645	FRAME/REAR RT .....	1	26	613021	FITTING/GREASEM10x1 .....	5
08	613644	FRAME/REAR LT .....	1	27	B11162A	WASHER 31/32 SPECIAL .....	2
10	613929	SUPPORT/CENTER .....	1	28	170056 <sub>b</sub>	JACKSTAND (NEW STYLE) .....	1
11	656176	CS M20x120 .....	2		071117 <sub>b</sub>	JACKSTAND (OLD STYLE) .....	1
12	656174	CS M18x110 .....	2		143469 <sub>b</sub>	JACKSTAND (FULTON) .....	1
13	656175	CS M18x130 .....	1	29	170601	PIN .....	1
14	656187	LN M18 .....	3	30	612773	CP 2.5mm .....	1
15	071250	NILN M20 .....	2	31	613652	BAR/TRANSPORT .....	1
16	613647	STRAP .....	2	32	076099	COTTER/HAIR PIN .....	2
17	613646	STRAP/OFFSET .....	2	33	170607 <sub>a</sub>	KIT/BRACKET ASSY .....	1
18	613932	SUPPORT/PIVOT .....	1				
19	613966	CS M22x130 .....	1				

**a) Includes Warning Decals 093367, 093373 and 093381.**  
**b) See Jackstand Breakdowns for details.**

# WR520/522 – SIDE FRAMES



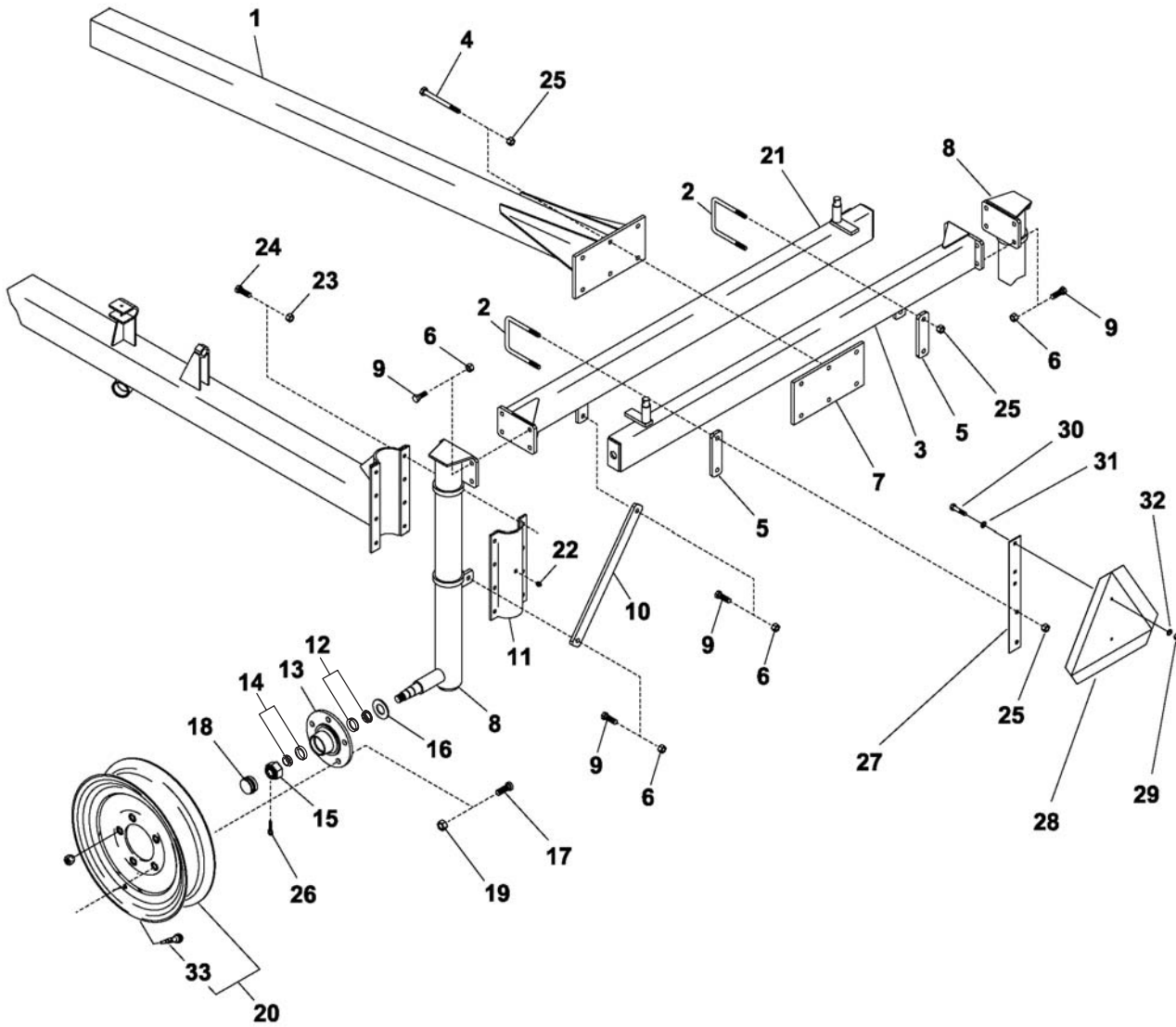


## WR520/522 – SIDE FRAMES

Ref. No.	Part No.	Description	Qty. Req.	Ref. No.	Part No.	Description	Qty. Req.
01	170608 <sub>a</sub>	KIT/FRAME REAR RH 6 BOLT . . . . . 1 (6 bolt flange & saddle mount lift pipe stand)	1	11	159379	FRAME FRONT LH 6 BOLT (ASN12000) 1 (6 bolt flange & saddle mount lift pipe stand)	1
	614074 <sub>a</sub>	FRAME/REAR RH 6 BOLT . . . . . 1 (6 bolt flange & keyhole slotted lift pipe stand)	1		614072	FRAME/FRONT LH 6 BOLT . . . . . 1 (6 bolt flange & keyhole slotted lift pipe stand)	1
	613606 <sub>a</sub>	FRAME/REAR RH 4 BOLT . . . . . 1 (4 bolt flange, keyhole slotted lift pipe stand)	1			(AFTER SN10038)	
02	613605	PIVOT/SAFETY PARKING . . . . . 2	2		613609	FRAME/FRONT LH 4 BOLT . . . . . 1 (4 bolt flange & keyhole slotted lift pipe stand)	1
03	613613	LIFT PIPE/SHORT . . . . . 2	2			(BEFORE SN10039)	
04	159380	PIPE LIFT LH . . . . . 1	1				
05	613614	LIFT PIPE/EXTENSION (522 ONLY) . . . . 2	2				
06	656130	CS M8x50 . . . . . AR	AR	12	614070	EXTENSION LH 6 BOLT (522 ONLY) . . . 1 (6 bolt flange & saddle mount lift pipe stand)	1
07	071245	NILN M8 . . . . . AR	AR			(AFTER SN10038)	
08	159381	FRAME (FRONT RH) 6 BOLT . . . . . 1 (6 bolt flange & saddle mount lift pipe stand)	1		613611	EXTENSION/LH 4 BOLT (522 ONLY) . . . 1 (4 bolt flange & keyhole slotted lift pipe stand)	1
	614075	FRAME/FRONT RH 6 BOLT . . . . . 1 (6 bolt flange & keyhole slotted lift pipe stand)	1			(BEFORE SN10039)	
	613608	FRAME/FRONT RH 4 BOLT . . . . . 1 (4 bolt flange & keyhole slotted lift pipe stand)	1	13	656017	CS M12x85 . . . . . AR	AR
		(BEFORE SN10039)		14	071247	NILN M12 . . . . . AR	AR
09	614069	EXTENSION RH 6 BOLT (522 ONLY) . . . 1 (6 bolt flange & saddle mount lift pipe stand)	1	13	656017	CS M12x85 . . . . . AR	AR
		(AFTER SN10038)		14	071247	NILN M12 . . . . . AR	AR
	613610	EXTENSION/RH 4 BOLT (522 ONLY) . . . 1 (4 bolt flange & keyhole slotted lift pipe stand)	1	15	656144	CS M12x90 . . . . . 2	2
		(BEFORE SN10039)		16	613096	HANDLE/ADJUSTING . . . . . 2	2
10	170610 <sub>a</sub>	REAR FRAME LH 6 BOLT . . . . . 1 (w/square support for jack & 6 bolt flange)	1	17	613630	HANDLE/COMPLETE . . . . . 2	2
		(AFTER SN12000)		18	656065	JN M12 . . . . . 2	2
	170609 <sub>a</sub>	KIT/FRAME REAR LH 6 BOLT . . . . . 1 (w/round support for jack & 6 bolt flange)	1	19	066452	PIN/LOCK . . . . . 12	12
		(BEFORE SN12001)		23	170124	PIPE/LIFT RH . . . . . 1	1
	614073 <sub>a</sub>	FRAME/REAR LH 6 BOLT . . . . . 1 (6 bolt flange & keyhole slotted lift pipe stand)	1				
		(AFTER SN10038)					
	613607 <sub>a</sub>	FRAME/REAR LH 4 BOLT . . . . . 1 (w/o support for jack & 4 bolt flange)	1				
		(BEFORE SN10039)					

**a) Includes Warning Decal 093642.**

# WR520/522 – REAR FRAME & REAR DRAWBAR

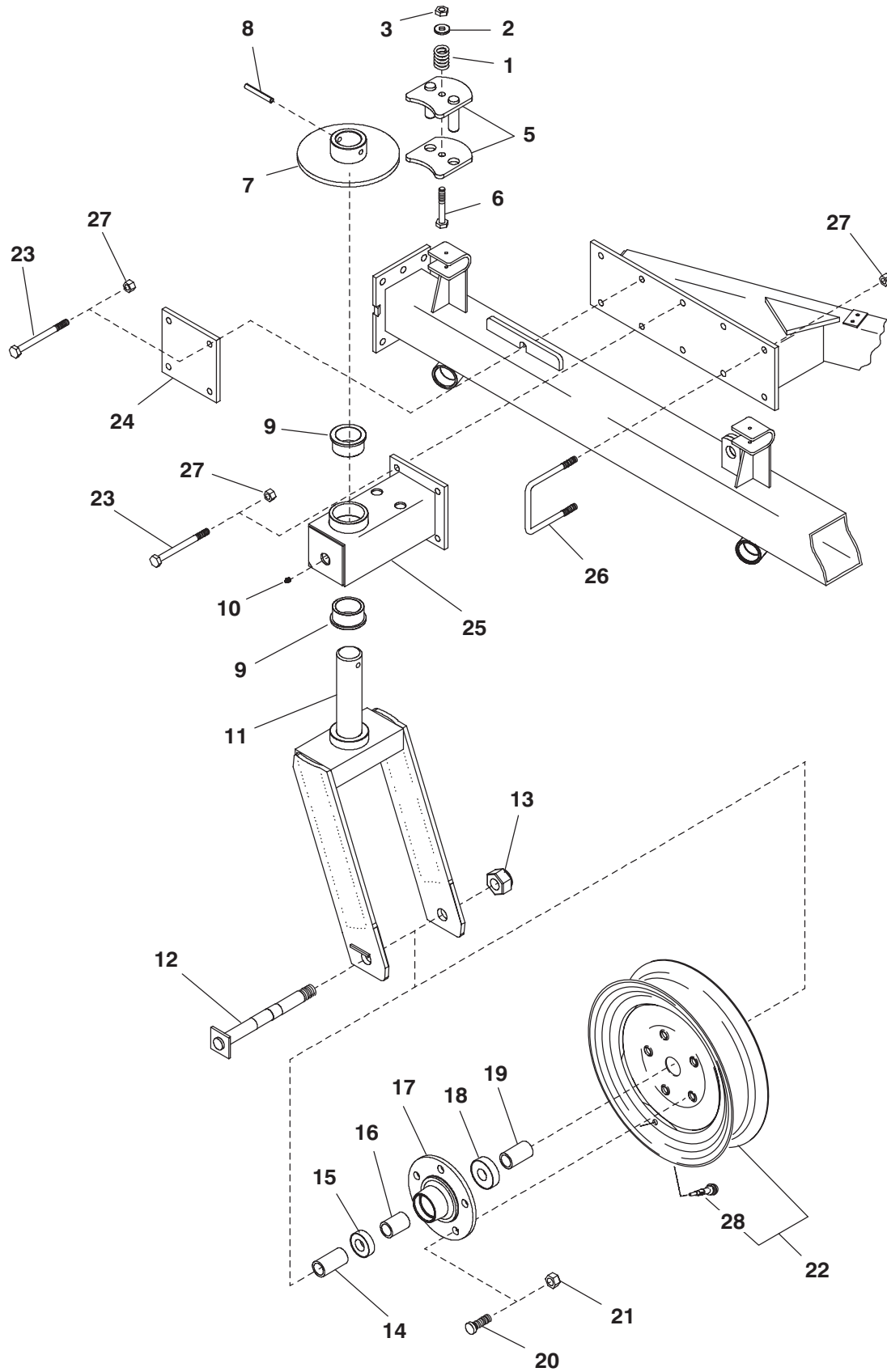


## WR520/522 – REAR FRAME & REAR DRAWBAR

Ref. No.	Part No.	Description	Qty. Req.	Ref. No.	Part No.	Description	Qty. Req.
01	613931	SUPPORT/CONTROL .....	1	18	612997	CAP/HUB .....	2
02	613569	U-BOLT M12x102x125 .....	4	19	613049	NUT/CONICAL LUG .....	20
03	170122	FRAME/REAR R.H. ....	1	20	614031	GROUND WHEEL (14" TIRES) .....	6
04	656026	CS M12x140 .....	22		612992	RIM (15" TIRES) .....	6
05	613621	BRACKET .....	2	21	170120	FRAME/REAR L.H. ....	1
06	113304	LN M12 .....	56	22	613021	FITTING/GREASE M10x1 .....	9
07	613933	PLATE/REAR SUPPORT (6 HOLES) ....	1	23	071246	NILN M10 .....	16
08	614030	AXLE/REAR .....	2	24	656008	CS M10x30 .....	16
09	656017	CS M12x35 .....	24	25	113304	LN M12 .....	30
10	614036	BRACE/REAR .....	2	26	655018	CP 3/16x1-1/4 .....	2
11	170612 <sub>a</sub>	KIT/AXLE CAP .....	2	27	130422	BRACKET/SMV .....	1
12	612996	BEARING/TAPERED ROLLER .....	2	28	145235	SMV MARKER/MOUNTED .....	1
13	612994	HUB/WHEEL .....	2	29	656047	HN M6-1.0 .....	2
14	114288	BEARING ASSY .....	2	30	656082	CS M6-1 X 25 .....	2
15	613272	NUT/SPINDLE .....	2	31	654002	FW 1/4 .....	2
16	613271	WASHER/SPINDLE .....	2	32	656114	LW M6 .....	2
17	613067	BOLT/HUB 16x45 .....	20	33	045581	VALVE/TIRE .....	6

**a) Includes 145216 red reflector decal and 613021 grease fitting.**

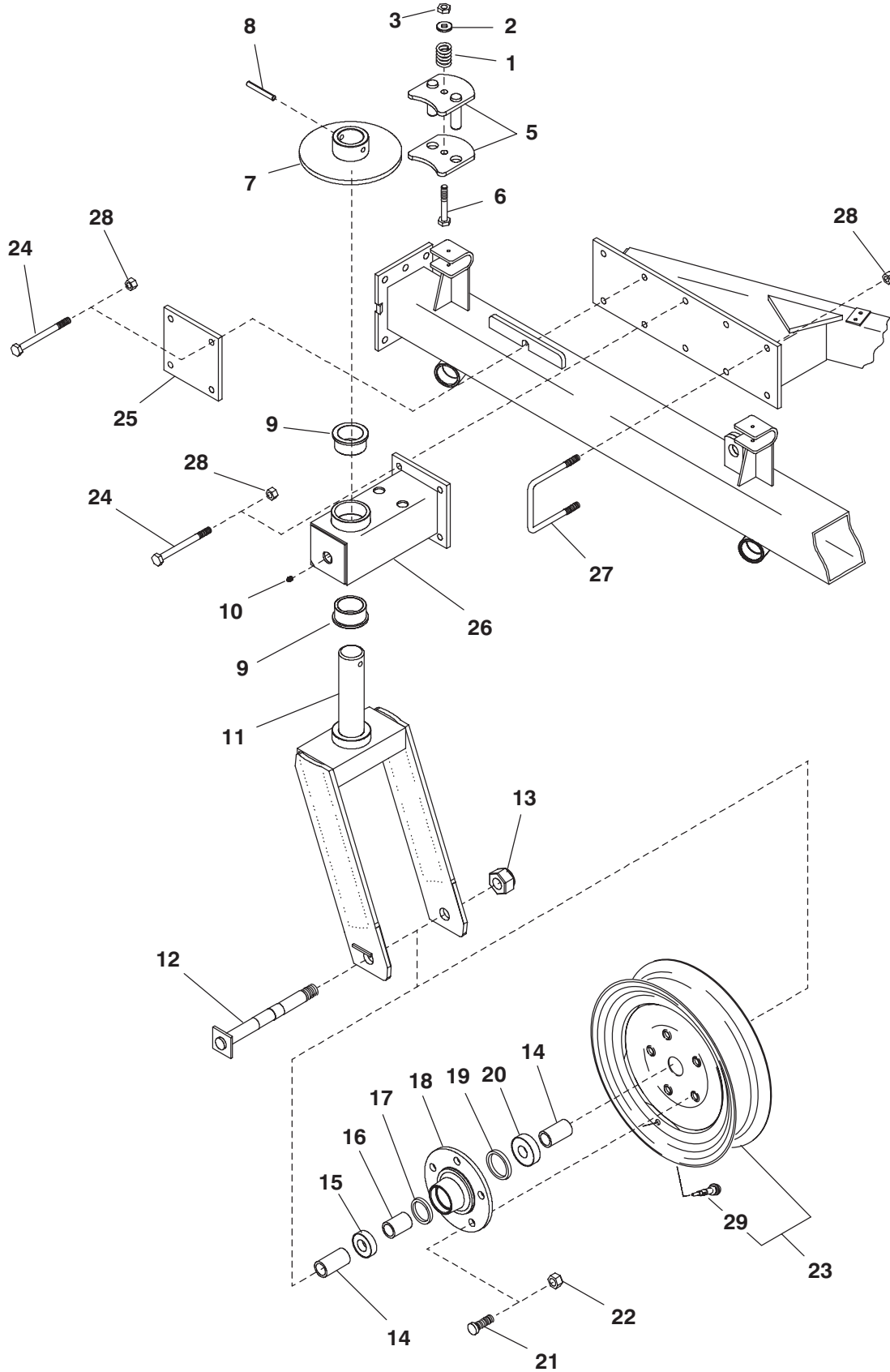
# WR520/522 – PIVOT WHEEL (AFTER SN8600-520 & SN9600-522)



## WR520/522 – PIVOT WHEEL (AFTER SN8600-520 & SN9600-522)

Ref. No.	Part No.	Description	Qty. Req.	Ref. No.	Part No.	Description	Qty. Req.
01	613055	SPRING/BRAKE .....	2	16	613627	SPACER/INTERNAL .....	2
02	654009	FW 1/2 .....	2	17	145060	HUB/WHEEL .....	2
03	071247	NILN M10 .....	2	18	301202	BEARING .....	2
05	613056	PLATES/BRAKE .....	2	19	170550	SPACER/PIVOT (58mm) .....	4
06	656022	CS M12x90 .....	2	20	613067	BOLT/HUB 16x40 .....	10
07	613057	DISC .....	2	21	613049	NUT/CONICAL LUG 16mm .....	10
08	610455	PIN/SPRING .....	2	22	614031	GROUND WHEEL (14" TIRES) .....	2
09	613063	BUSHING/WHEEL FORK PIVOT .....	4	23	656026	CS M12x140 .....	16
10	613021	FITTING/GREASE M10x1 .....	2	24	613570	PLATE/FRONT WHEEL .....	2
11	614032	FORK/WHEEL .....	2	25	170611 <sub>a</sub>	KIT/SUPPORT FORK .....	2
12	614033	AXLE/WHEEL .....	2	26	613569	U-BOLT .....	2
13	613682	NILN M24 .....	2	27	113304	LN M12 .....	20
14	170549	SPACER/PIVOT (64mm) .....	2	28	045581	VALVE/TIRE .....	1
15	613113	BEARING/BALL .....	2	<b>a) Includes 145217 Amber Reflector Decal.</b>			

WR520/522 – PIVOT WHEEL (BEFORE SN8601-520 & SN9601-522)

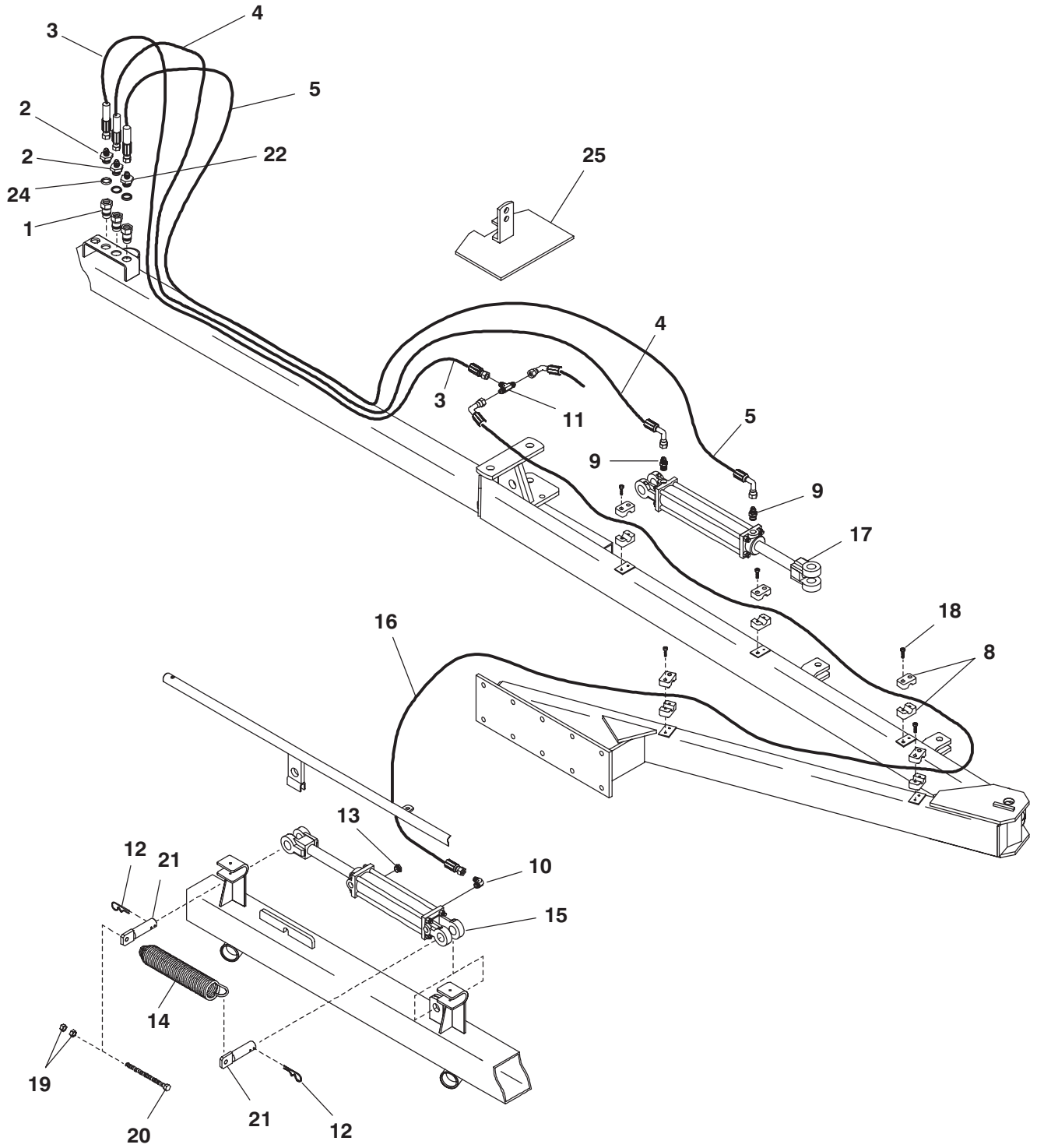


## WR520/522 – PIVOT WHEEL (BEFORE SN8601-520 & SN9601-522)

Ref. No.	Part No.	Description	Qty. Req.	Ref. No.	Part No.	Description	Qty. Req.
01	613055	SPRING/BRAKE .....	2	17	613628	SPACER/SMALL BEARING .....	2
02	654009	FW 1/2 .....	2	18	612994	HUB/WHEEL .....	2
03	071247	NILN M10 .....	2	19	613629	SPACER/LARGE BEARING .....	2
05	613056	PLATES/BRAKE .....	2	20	301202	BEARING .....	2
06	656022	CS M12x90 .....	2	21	613067	BOLT/HUB 16x40 .....	10
07	613057	DISC .....	2	22	613049	NUT/CONICAL LUG 16mm .....	10
08	610455	PIN/SPRING .....	2	23	612992	RIM (15" TIRES) .....	2
09	613063	BUSHING/WHEEL FORK PIVOT .....	4	24	656026	CS M12x140 .....	16
10	613021	FITTING/GREASE M10x1 .....	2	25	613570	PLATE/FRONT WHEEL .....	2
11	171296	KIT/FORK WHEEL .....	2	26	170611 <sup>a</sup>	KIT/SUPPORT FORK .....	2
12	613625	AXLE/GROUND WHEEL .....	2	27	613569	U-BOLT .....	2
13	613682	NILN M24 .....	2	28	113304	LN M12 .....	20
14	613626	SPACER .....	4	29	045581	VALVE/TIRE .....	1
15	613113	BEARING/BALL .....	2				
16	613627	SPACER/INTERNAL .....	2				

**a) Includes 145217 Amber Reflector Decal.**

# WR520/522 – HYDRAULICS (AFTER SN12000)

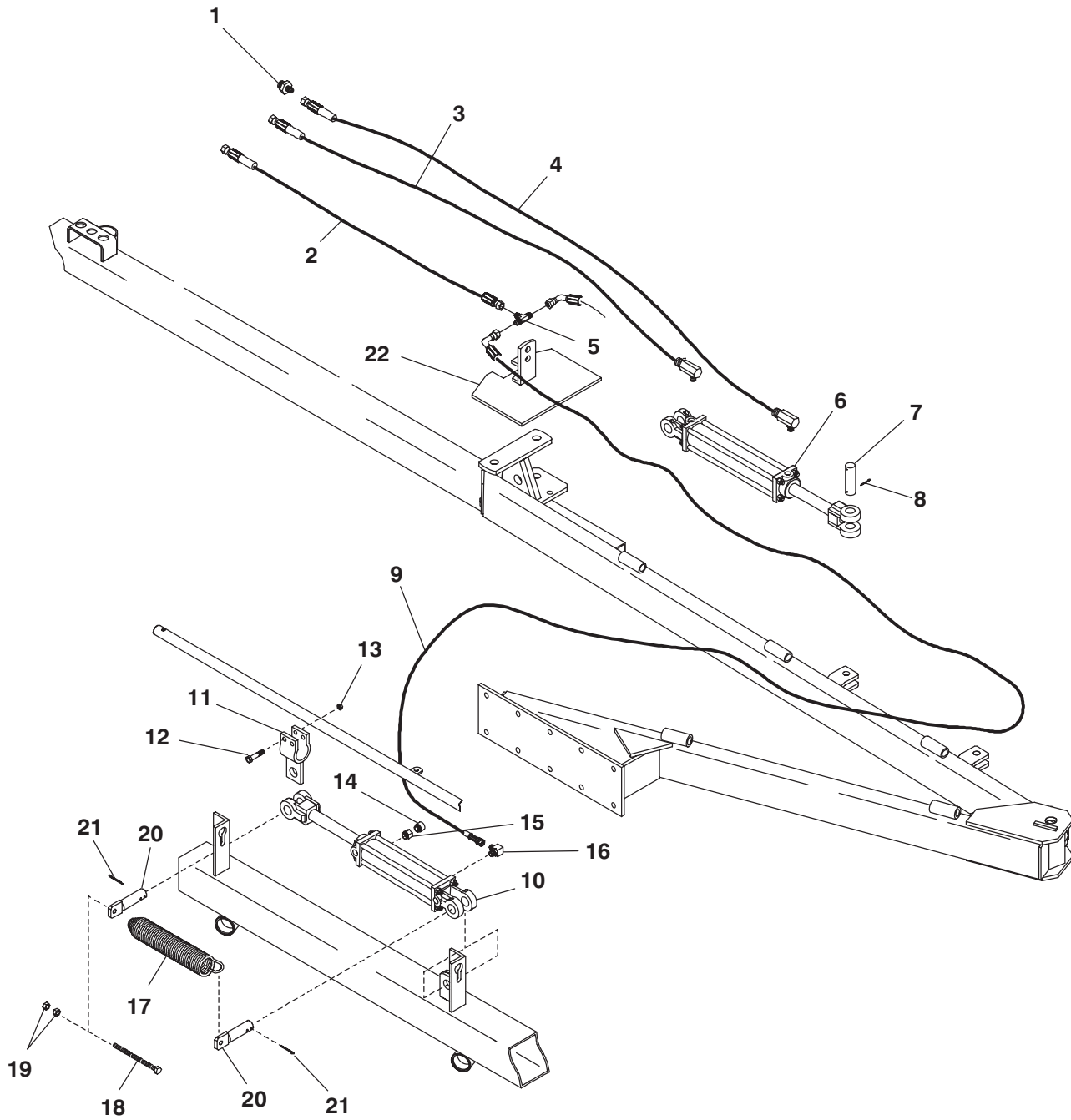




## WR520/522 – HYDRAULICS (AFTER SN12000)

Ref. No.	Part No.	Description	Qty. Req.	Ref. No.	Part No.	Description	Qty. Req.
01	170323	FAST FLUID CONNECTOR .....	3	15	170325 <sub>a</sub>	CYLINDER/HYD 2.0x8 .....	2
02	170324	ADAPTER 9/16 JIC .....	2	16	130426	HOSE/ASSY .....	2
03	170545	HOSE/HYD 2700mm .....	1	17	170326 <sub>b</sub>	CYLINDER/HYD 2.5x10 .....	1
04	170328	HOSE/HYD 2200mm .....	1	18	651508	CS M6x25 .....	20
05	170546	HOSE/HYD 2500mm .....	1	19	656049	HN M10 .....	4
08	145644	CLAMP/HOSE .....	20	20	656173	CS M1-x130 .....	2
09	062889	ADAPTER/STEEL PIPE .....	2	21	144549	PIVOT/PULLEY .....	4
10	057650	HYD FITTING .....	2	22	170327	RESTRICTOR 9/16-18 JIC 1 mm .....	1
11	087393	TEE/HYD FITTING .....	1	24	170329	WASHER/O-RING .....	3
12	656074	CP M5x40 .....	4	25	130418 <sub>c</sub>	BRACKET/ASSY .....	1
13	170066	PLUG/BREATHER .....	2	<b>a) For Seal Kit order 170330.</b> <b>b) For Seal Kit order 170331.</b> <b>c) Includes 093367, 093373 &amp; 093381 Warning Decals.</b>			
14	613635	SPRING/LIFT CYLINDER .....	2				

# WR520/522 – HYDRAULICS (BEFORE SN12001)



## WR520/522 – HYDRAULICS (BEFORE SN12001)

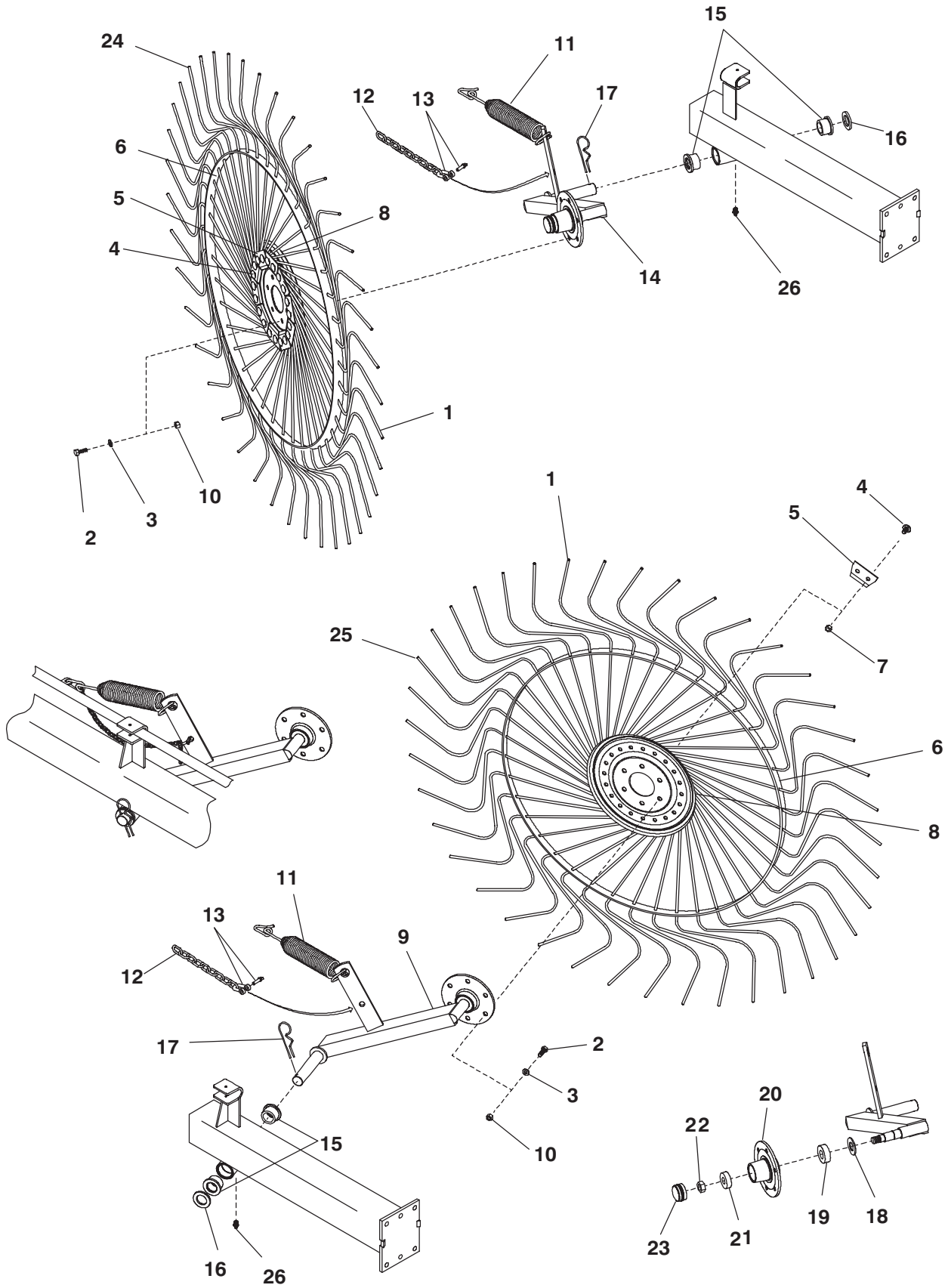
Ref. No.	Part No.	Description	Qty. Req.	Ref. No.	Part No.	Description	Qty. Req.
01	130424	ADAPTER/SWIVEL(0.035" DIA) .....	1	13	071245	NILN M8 .....	2
02	095022	HOSE/HYD (3/8 X 84") .....	1	14	089860	BREATHER ASSY .....	1
03	095021	HOSE/HYD (3/8 X 96") .....	1	15	098333	FITTING/STRAIGHTNPT-O-RING .....	1
04	095020	HOSE/HYD (3/8 X 102") .....	1	16	068938	ELBOW/90° ADJUSTABLE .....	1
05	098691	TEE/BULKHEAD .....	1	17	613635	SPRING/LIFT CYLINDER .....	1
06	130413 <sub>a</sub>	CYLINDER/ASSY 2.5 X 10 .....	1	18	656173	CS M10 X 130 .....	1
07	613039	PIN/CYLINDER .....	2	19	656049	HN M10 .....	2
08	655030	CP 1/4 X 2 .....	4	20	613604	PIVOT/CYLINDER .....	2
09	130426	HOSE/HYD (3/8 X 162") .....	2	21	656074	CP M5 X 40 .....	2
10	130411	CYLINDER/ASSY 2 X 8 .....	2	22	130418 <sub>c</sub>	BRACKET/ASSY .....	1
11	613620	BRACKET/CYLINDER .....	1				
12	656130	CS M8 X 50 .....	2				

a) For Seal Kit order 095019.

b) For Seal Kit order 141672.

c) Includes 093367, 093373 & 093381 Warning Decals.

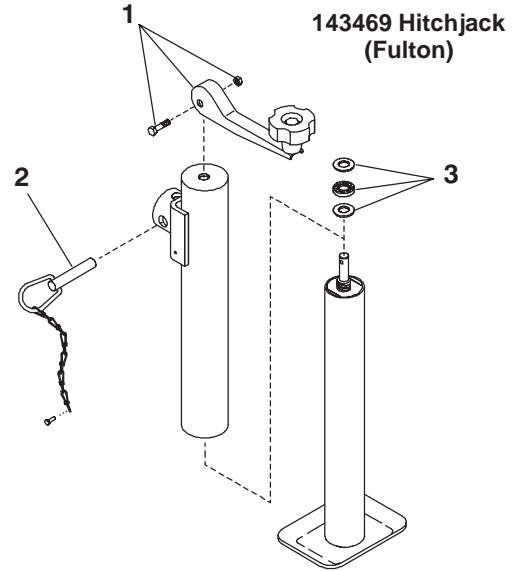
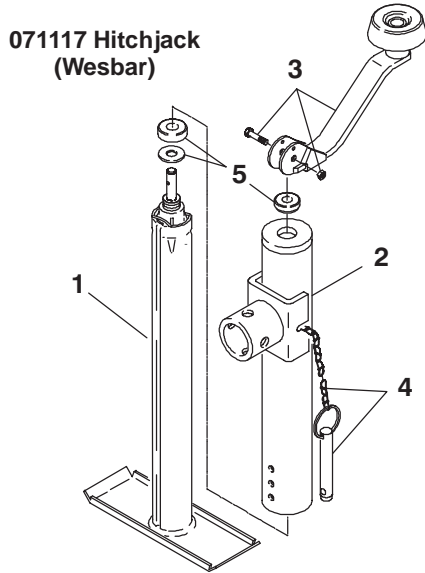
# WR520/522 – ARMS & WHEELS



## WR520/522 – ARMS & WHEELS

Ref. No.	Part No.	Description	Qty. Req.	Ref. No.	Part No.	Description	Qty. Req.
<b>WR520 QUANTITIES</b>				<b>WR522 QUANTITIES</b>			
01	155967	TINE/SPRING – 40 PACK .....	10	01	155967	TINE/SPRING – 40 PACK .....	12
02	656007	CS M10x25 .....	60	02	656007	CS M10x25 .....	72
03	612103	FW M10 .....	60	03	612103	FW M10 .....	72
04	612785	BOLT/TOOTH .....	400	04	612785	BOLT/TOOTH .....	480
05	612784	CLIP .....	200	05	612784	CLIP .....	240
06	612781	RIM .....	10	06	612781	RIM .....	12
07	656049	HN M12 .....	400	07	656049	HN M12 .....	480
08	612782	PLATE/TINE .....	10	08	612782	PLATE/TINE .....	12
09	613634	ARM/LH .....	5	09	613634	ARM/LH .....	6
10	656049	HN M10 .....	60	10	656049	HN M10 .....	72
11	145434	SPRING/EXT RAKE WHEEL .....	10	11	145434	SPRING/EXT RAKE WHEEL .....	12
12	613042	CHAIN .....	10	12	613042	CHAIN .....	12
13	613043	SHACKLE .....	10	13	613043	SHACKLE .....	12
14	613633	ARM/RH .....	5	14	613633	ARM/RH .....	6
15	613046	BUSHING/PIVOT .....	20	15	613046	BUSHING/PIVOT .....	24
16	651152	FW 1-1/4 .....	10	16	651152	FW 1-1/4 .....	12
17	076068	PIN/GROOVE 5/16 .....	10	17	076068	PIN/GROOVE 5/16 .....	12
18	612786	SHIELD/BEARING .....	10	18	612786	SHIELD/BEARING .....	12
19	062367	BEARING/BALL .....	10	19	062367	BEARING/BALL .....	12
20	612787	HUB .....	10	20	612787	HUB .....	12
21	520074	BEARING/BALL .....	10	21	520074	BEARING/BALL .....	12
22	656134	LN M18 .....	10	22	656134	LN M18 .....	12
23	612788	CAP/HUB .....	10	23	612788	CAP/HUB .....	12
24	614041	WHEEL/FINGER RH .....	5	24	614041	WHEEL/FINGER RH .....	6
25	614042	WHEEL/FINGER LH .....	5	25	614042	WHEEL/FINGER LH .....	6
26	613021	FITTING/GREASE 10M .....	10	26	613021	FITTING/GREASE 10M .....	12
		(LATER MODELS)				(LATER MODELS)	

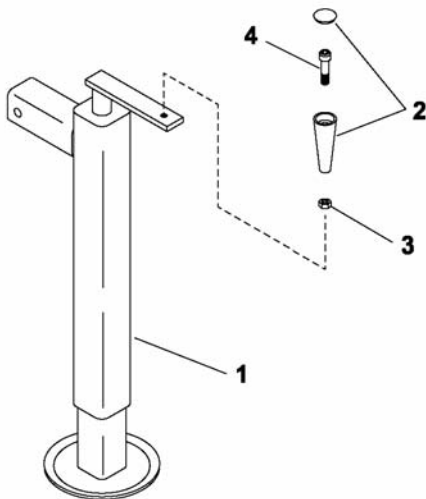
# WR520/522 – HITCHJACKS (AFTER SN12000)



Ref. No.	Part No.	Description	Qty. Req.
	071117	HITCHJACK .....	1
		CONSISTS OF:	
01	076867	TUBE/INSIDE ASSY .....	1
02	076868	TUBE/OUTER .....	1
03	076866	HANDLE ASSY .....	1
04	061276	PIN & CHAIN .....	1
05	094300	KIT/INTERNAL PARTS .....	1

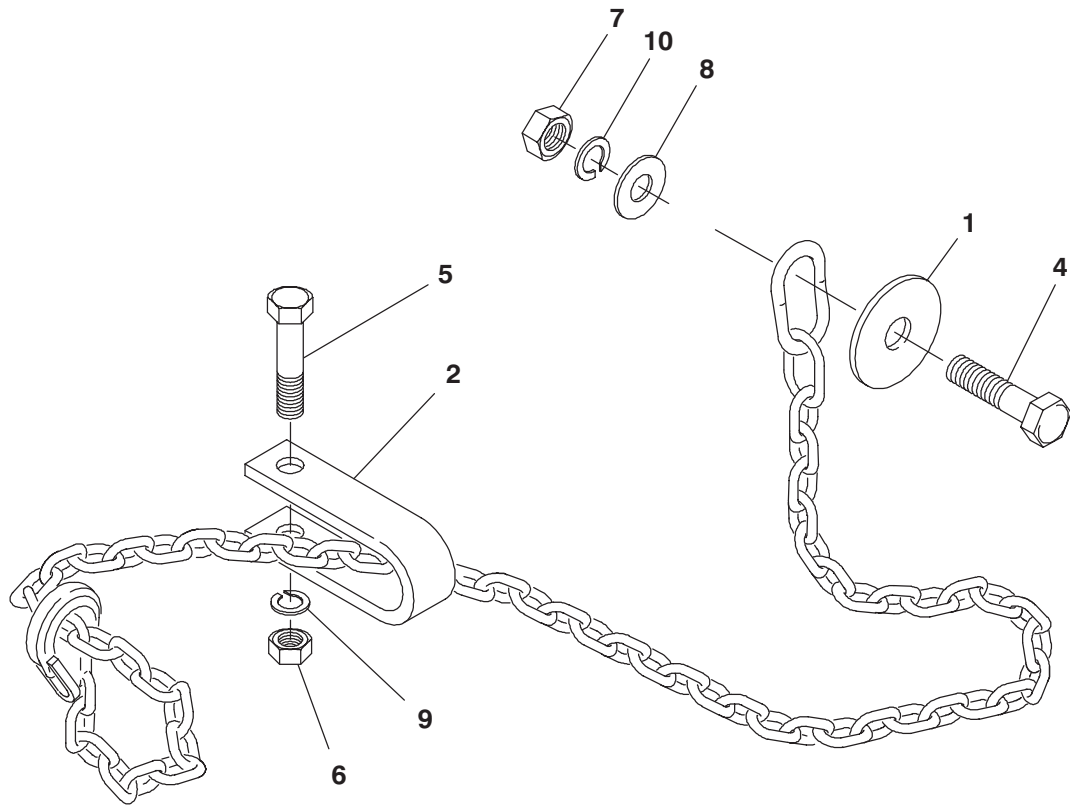
Ref. No.	Part No.	Description	Qty. Req.
	143469	HITCHJACK .....	1
		CONSISTS OF:	
01	143603	KIT/JACK HANDLE .....	1
02	143601	KIT/PIN & CHAIN 9/16 .....	1
03	143599	KIT/BEARING 2000# .....	1

## 170056 Hitchjack



Ref. No.	Part No.	Description	Qty. Req.
	170056	HITCHJACK .....	1
		CONSISTS OF:	
01	170058	JACKSTAND .....	1
02	613096	HANDLE/ADJUSTING .....	1
03	656065	JN M12-1.75 .....	1
04	656144	CSM12-1.75X110 .....	1

142965 Safety Chain

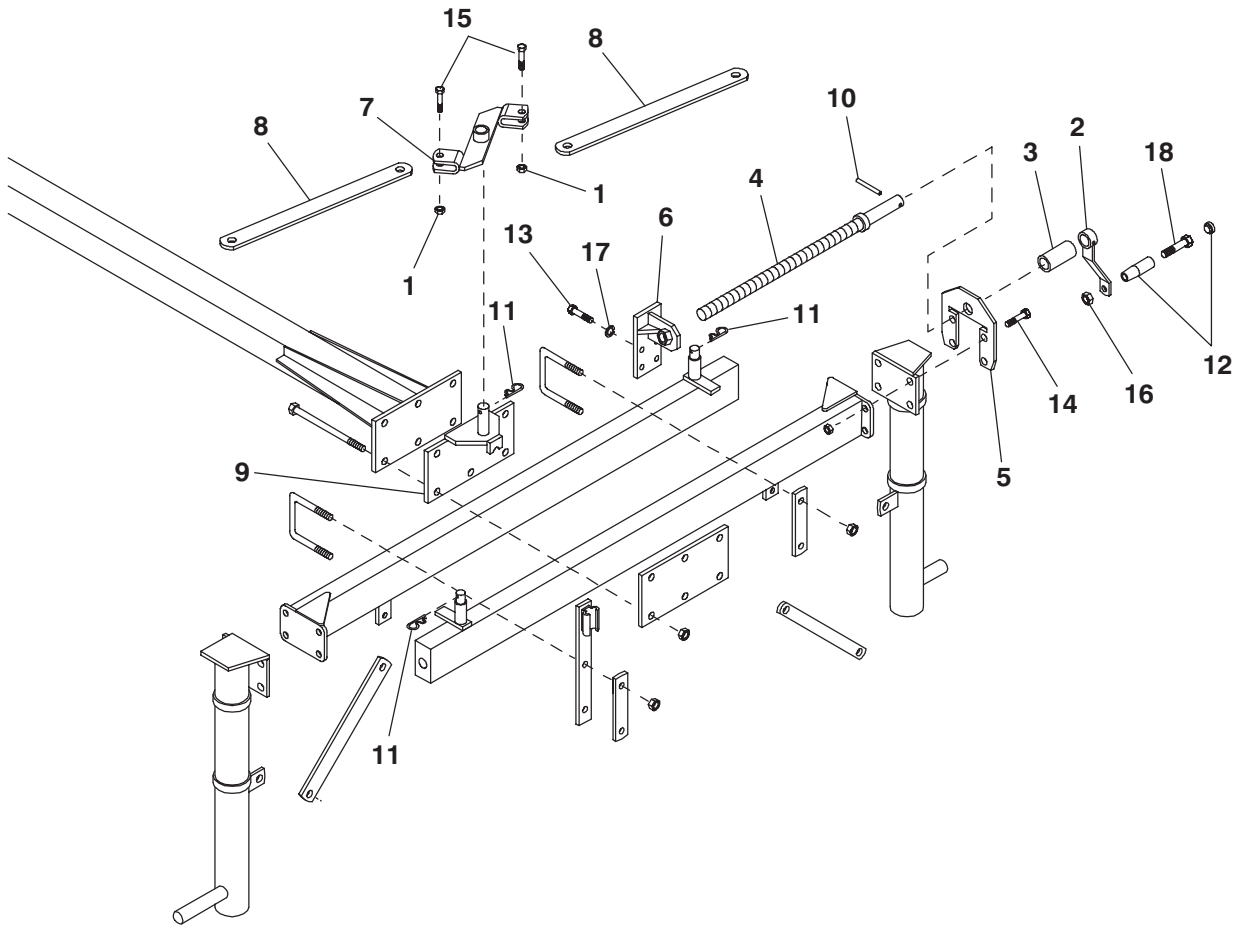


Ref. No.	Part No.	Description	Qty. Req.	Ref. No.	Part No.	Description	Qty. Req.
	142965	CHAIN/5 TON SAFETY .....	1	05	650695	CS 5/8X3-1/2 .....	1
		CONSISTS OF:		06	653021	HN 5/8 .....	1
01	069076	FW 25/32 SPECIAL .....	1	07	653026	HN 3/4 .....	1
02	080894	CLEVIS .....	1	08	654014	FW 3/4 .....	1
04	650172	CS 3/4X3-1/4 .....	1	09	654032	LW 5/8 .....	1
	650649	CS 3/4X2 .....	1	10	654034	LW 3/4 .....	1

# WR520/522 – OPTIONS & ACCESSORIES

## WINDROW ADJUSTMENT KIT (AFTER SN11100)

---

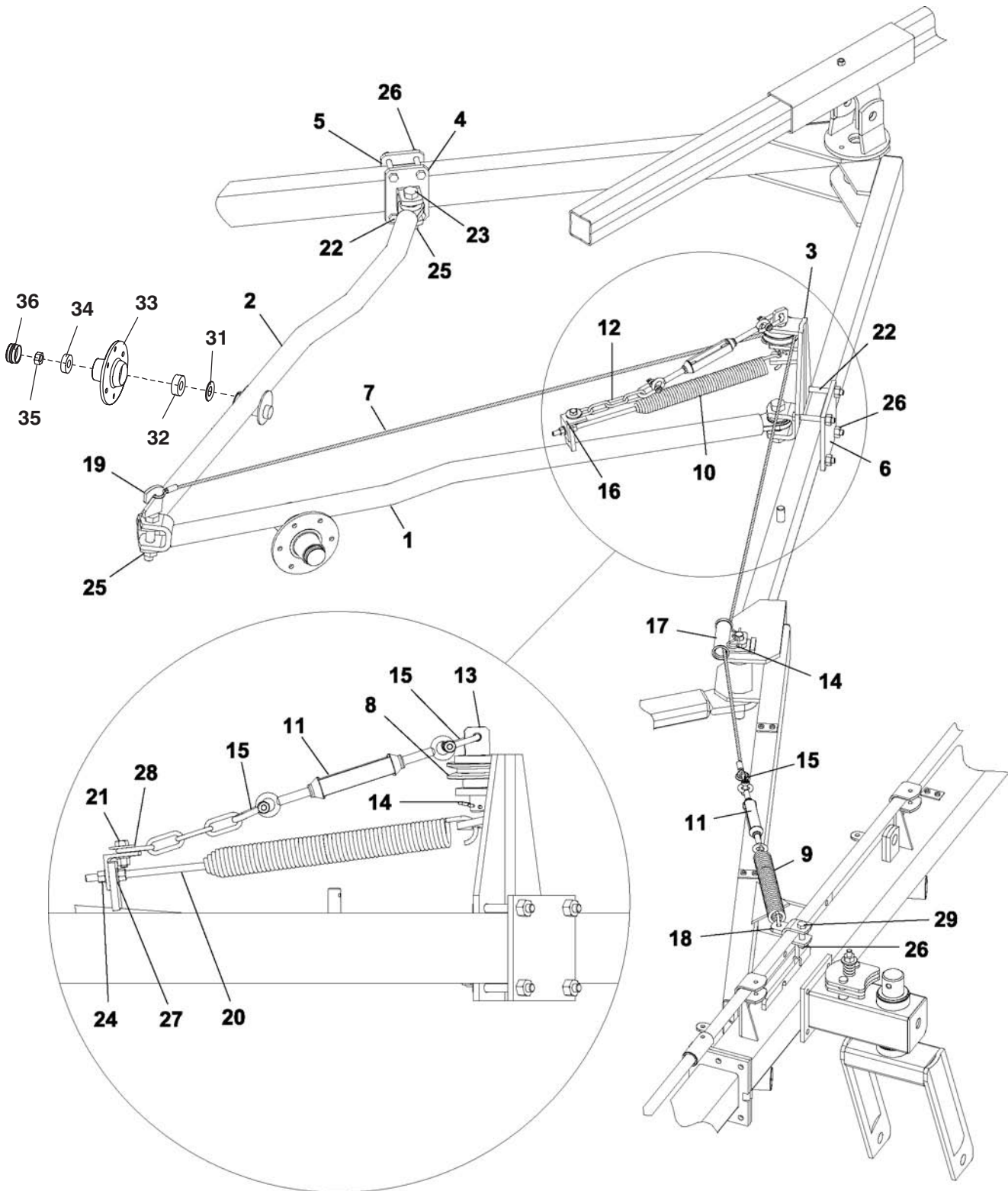




**WR520/522 – OPTIONS & ACCESSORIES**  
**WINDROW ADJUSTMENT KIT (AFTER SN11100)**

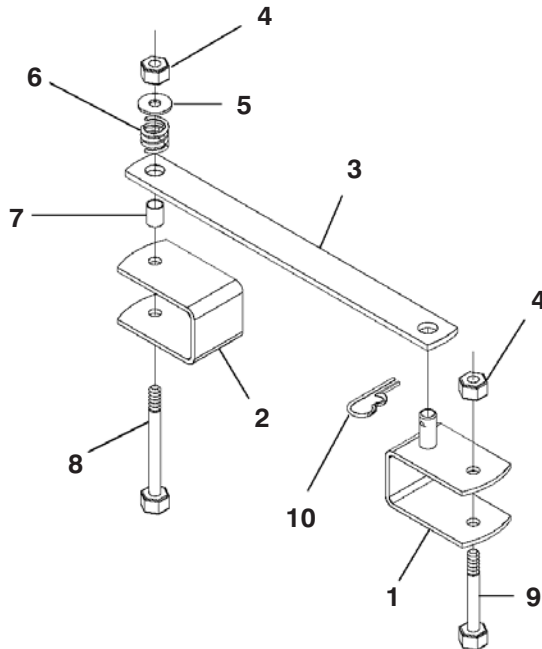
Ref. No.	Part No.	Description	Qty. Req.	Ref. No.	Part No.	Description	Qty. Req.
01	071249	NILN M16 .....	2	10	610466	PIN/SPRING .....	1
02	154348	CRANK .....	1	11	612759	PIN/HAIRPIN COTTER 4MM .....	3
03	154349	SPACER .....	1	12	613096	HANDLE/ADJUSTING .....	1
04	154350	SCREW/ADJUSTMENT .....	1	13	656016	CS M12 X 30 GR10.9 .....	4
05	154351	FLANGE/ADJUSTMENT .....	1	14	656019	CS M12 X 45 GR10.9 .....	4
06	154352	ADJ. SCREW SUPPORT .....	1	15	656036	CS M16 X 55 GR8.8 .....	2
07	154353	LEVER/ADJUSTMENT .....	1	16	656065	JN M12 .....	1
08	154354	ADJUSTMENT STRAP .....	2	17	656118	LW M12 .....	4
09	154355	PIVOT SUPPORT .....	1	18	656144	SHCS M12 X 110 GR12.9 .....	1

**WR520/522 – OPTIONS & ACCESSORIES (CENTER WHEEL KIT)**



## WR520/522 – OPTIONS & ACCESSORIES (CENTER WHEEL KIT)

Ref. No.	Part No.	Description	Qty. Req.	Ref. No.	Part No.	Description	Qty. Req.
01	144543	ARM/EXTENSION L.H. ....	1	19	614053	BOLT/HOOK ....	1
02	144544	ARM/EXTENSION R.H. ....	1	20	144550	ROD/THREADED ....	1
03	614047	BRACKET/SUPPORT ....	1	21	656183	CS M10-1.25 X 35 GR8 ....	1
04	614050	STOP/ARM ....	1	22	656022	CS M12-1.75 X 90 GR8 ....	8
05	612790	PLATE ....	1	23	656042	CS M20-2.50 X 90 GR8 ....	2
06	613570	PLATE/FRONT WHEEL ....	1	24	656049	HN M10-1.50 ....	15
07	144542	WIRE ROPE/3200MM ....	1	25	071250	NILN M20 ....	3
08	156767	PULLEY ....	1	26	113304	NUT/SELF LOCKING ....	9
09	144552	SPRING/EXTENSION ....	1	27	612103	WASHER ....	13
10	613635	SPRING/LIFT CYLINDER ....	1	28	134966	FW 1/2 ....	1
11	613007	TURNBUCKLE/CHAIN ....	2	29	656020	CS M12-1.75 X 55 GR8 ....	1
12	144546	CHAIN ....	1	30	656007	CS M10-1.50 X 25 GR8 ....	12
13	144549	PIVOT/PULLEY ....	1	31	612786	SHIELD/BEARING ....	12
14	612773	PIN/HAIRPIN COTTER 2.5MM ....	2	32	062367	BEARING/BALL ....	12
15	613001	SHACKLE ....	3	33	612787	HUB ....	12
16	144545	L-BRACKET ....	1	34	520074	BEARING/BALL ....	12
17	614052	GUIDE/CABLE ....	1	35	656134	LN M18 ....	12
18	144548	BRACKET/CYLINDER ....	1	36	612788	CAP/HUB ....	12



Ref. No.	Part No.	Description	Qty. Req.
01	614059	BRACKET ....	1
02	614060	BRACKET ....	1
03	614058	BAR/TRANSPORT ....	1
04	656051	HN M14-2.00 ....	2
05	656152	WASHER/PLAIN M14 ....	1
06	614061	SPRING ....	1
07	614062	SPACER ....	1
08	656034	CS M14-2.00 X 130 GR8 ....	1
09	656031	CS M14-2.00 X 90 GR8 ....	1
10	612773	PIN/HAIRPIN COTTER 2.5MM ....	1

# Index

## A

Arms and Wheels, 18–19

## D

Decal Application, 2  
Decal Locations, 2–4

## F

Front Drawbar and Scissors, 4–5

## H

Hitchjack, 20  
Hydraulics, 14–17

## I

Introduction, 2

## O

Options & Accessories  
Center Wheel Kit, 24–25  
Safety Chain, 21

Windrow Adjustment Kit, 22–23

## P

Paint Notice, 2  
Pivot Wheel, 10–13

## R

Rear Frame and Rear Drawbar, 8–9

## S

Side Frames, 6–7

## WR520/522 - NUMERICAL INDEX

Part No.	Page No.	Ref. No.	Part No.	Page No.	Ref. No.	Part No.	Page No.	Ref. No.	Part No.	Page No.	Ref. No.
B11162A	05	27	113304	13	28	170056	05	28	612788	19	23
045581	09	33	113304	25	26	170056	20	00	612788	25	36
045581	11	28	114288	09	14	170058	20	01	612790	25	05
045581	13	29	119410	02	06	170066	15	13	612992	09	20
057650	15	10	130411	17	10	170120	09	21	612992	13	23
061276	20	04	130413	17	06	170122	09	03	612994	09	13
062367	19	19	130418	15	25	170124	07	23	612994	13	18
062367	25	32	130418	17	22	170323	15	01	612996	09	12
062889	15	09	130422	09	27	170324	15	02	612997	09	18
066452	07	19	130424	17	01	170325	15	15	613001	25	15
068938	17	16	130426	15	16	170326	15	17	613007	25	11
069076	21	01	130426	17	09	170327	15	22	613011	05	23
071117	05	28	134966	25	28	170328	15	04	613021	09	22
071117	20	00	142965	21	00	170329	15	24	613021	11	10
071245	07	07	143469	05	28	170545	15	03	613021	13	10
071245	17	13	143469	20	00	170546	15	05	613021	19	26
071246	09	23	143599	20	03	170549	11	14	613021	05	26
071247	07	14	143601	20	02	170550	11	19	613039	17	07
071247	07	14	143603	20	01	170601	05	29	613042	19	12
071247	11	03	144542	25	07	170607	05	33	613043	19	13
071247	13	03	144543	25	01	170608	07	01	613046	19	15
071249	23	01	144544	25	02	170609	07	10	613049	09	19
071250	05	15	144545	25	16	170610	07	10	613049	11	21
071250	25	25	144546	25	12	170611	11	25	613049	13	22
076068	19	17	144548	25	18	170611	13	26	613055	11	01
076099	05	32	144549	15	21	170612	09	11	613055	13	01
076866	20	03	144549	25	13	171296	13	11	613056	11	05
076867	20	01	144550	25	20	301202	11	18	613056	13	05
076868	20	02	144552	25	09	301202	13	20	613057	11	07
080894	21	02	145060	11	17	520074	19	21	613057	13	07
087393	15	11	145216	02	08	520074	25	34	613063	11	09
089860	17	14	145217	02	09	610455	11	08	613063	13	09
093367	02	02	145235	09	28	610455	13	08	613067	09	17
093373	02	04	145434	19	11	610466	23	10	613067	11	20
093381	02	03	145644	15	08	612103	19	03	613067	13	21
093642	02	01	154348	23	02	612103	25	27	613096	07	16
094220	02	06	154349	23	03	612759	23	11	613096	20	02
094300	20	05	154350	23	04	612773	05	30	613096	23	12
094913	02	05	154351	23	05	612773	25	10	613113	11	15
095020	17	04	154352	23	06	612773	25	14	613113	13	15
095021	17	03	154353	23	07	612781	19	06	613271	09	16
095022	17	02	154354	23	08	612782	19	08	613272	09	15
098333	17	15	154355	23	09	612784	19	05	613569	09	02
098691	17	05	155967	19	01	612785	19	04	613569	11	26
112390	02	07	156767	25	08	612786	19	18	613569	13	27
113304	09	06	159379	07	11	612786	25	31	613570	11	24
113304	09	25	159380	07	04	612787	19	20	613570	13	25
113304	11	27	159381	07	08	612787	25	33	613570	25	06





# WR520/522 - NUMERICAL INDEX

Part No.	Page No.	Ref. No.	Part No.	Page No.	Ref. No.	Part No.	Page No.	Ref. No.	Part No.	Page No.	Ref. No.
613604	17	20	613682	11	13	614075	07	08	656036	23	15
613605	07	02	613682	13	13	650172	21	04	656042	25	23
613606	07	01	613929	05	10	650649	21	04	656047	09	29
613607	07	10	613930	05	01	650695	21	05	656049	15	19
613608	07	08	613931	09	01	651152	19	16	656049	17	19
613609	07	11	613932	05	18	651508	15	18	656049	19	07
613610	07	09	613933	09	07	653021	21	06	656049	19	10
613611	07	12	613963	05	22	653026	21	07	656049	25	24
613613	07	03	613966	05	19	654002	09	31	656051	25	04
613614	07	05	613967	05	20	654009	11	02	656065	07	18
613620	17	11	614030	09	08	654009	13	02	656065	20	03
613621	09	05	614031	09	20	654014	21	08	656065	23	16
613625	13	12	614031	11	22	654032	21	09	656074	15	12
613626	13	14	614032	11	11	654034	21	10	656074	17	21
613627	11	16	614033	11	12	655018	09	26	656082	09	30
613627	13	16	614036	09	10	655030	17	08	656114	09	32
613628	13	17	614037	05	04	656007	19	02	656118	23	17
613629	13	19	614038	05	03	656007	25	30	656130	07	06
613630	07	17	614041	19	24	656008	09	24	656130	17	12
613633	19	14	614042	19	25	656016	23	13	656134	19	22
613634	19	09	614047	25	03	656017	07	13	656134	25	35
613635	15	14	614050	25	04	656017	07	13	656144	07	15
613635	17	17	614052	25	17	656017	09	09	656144	20	04
613635	25	10	614053	25	19	656019	23	14	656144	23	18
613643	05	02	614058	25	03	656020	25	29	656152	25	05
613644	05	08	614059	25	01	656022	11	06	656173	15	20
613645	05	07	614060	25	02	656022	13	06	656173	17	18
613646	05	17	614061	25	06	656022	25	22	656174	05	12
613647	05	16	614062	25	07	656026	09	04	656175	05	13
613650	05	06	614069	07	09	656026	11	23	656176	05	11
613651	05	05	614070	07	12	656026	13	24	656177	05	21
613652	05	31	614072	07	11	656031	25	09	656183	25	21
613667	05	24	614073	07	10	656034	25	08	656187	05	14
613682	05	25	614074	07	01						

# TORQUE SPECIFICATIONS

**NOTE:** Use these torque values when tightening **GEHL** hardware (excluding: Locknuts and Self-tapping, Thread Forming and Sheet Metal Screws) unless specified otherwise.

All torque values are in Lb-Ft except those marked with an \* which are Lb-In  
(For metric torque value Nm, multiply Lb-Ft value by 1.355 or Lb-In value by 0.113)

Unified National Thread	Grade 2 		Grade 5 		Grade 8 	
	Dry	Lubed	Dry	Lubed	Dry	Lubed
8-32	19*	14*	30*	22*	41*	31*
8-36	20*	15*	31*	23*	43*	32*
10-24	27*	21*	43*	32*	60*	45*
10-32	31*	23*	49*	36*	68*	51*
1/4-20	66*	50*	9	75*	12	9
1/4-28	76*	56*	10	86*	14	10
5/16-18	11	9	17	13	25	18
5/16-24	12		19	14		20
3/8-16	20	15	30	23	45	35
3/8-24	23	17	35	25	50	
7/16-14	32	24	50	35	70	55
7/16-20	36	27	55	40	80	60
1/2-13	50	35	75	55	110	80
1/2-20	55	40	90	65	120	90
9/16-12	70	55	110	80	150	110
9/16-18	80	60	120	90	170	130
5/8-11	100	75	150	110	220	170
5/8-18	110	85	180	130	240	180
3/4-10	175	130	260	200	380	280
3/4-16	200	150	300	220	420	320
7/8-9	170	125	430	320	600	460
7/8-14	180	140	470	360	660	500
1-8	250	190	640	480	900	680
1-14	270	210	710	530	1000	740
Metric Course Thread	Grade 8.8 		Grade 10.9 		Grade 12.9 	
	Dry	Lubed	Dry	Lubed	Dry	Lubed
M6-1	8	6	11	8	13.5	10
M8-1.25	19	14	27	20	32.5	24
M10-1.5	37.5	28	53	39	64	47
M12-1.75	65	48	91.5	67.5	111.5	82
M14-2	103.5	76.5	145.5	108	176.5	131
M16-2	158.5	117.5	223.5	165.5	271	200

# GEHL®

**Gehl Company** 143 Water Street, P.O. Box 179, West Bend, WI 53095-0179 U.S.A.  
[www.gehl.com](http://www.gehl.com)