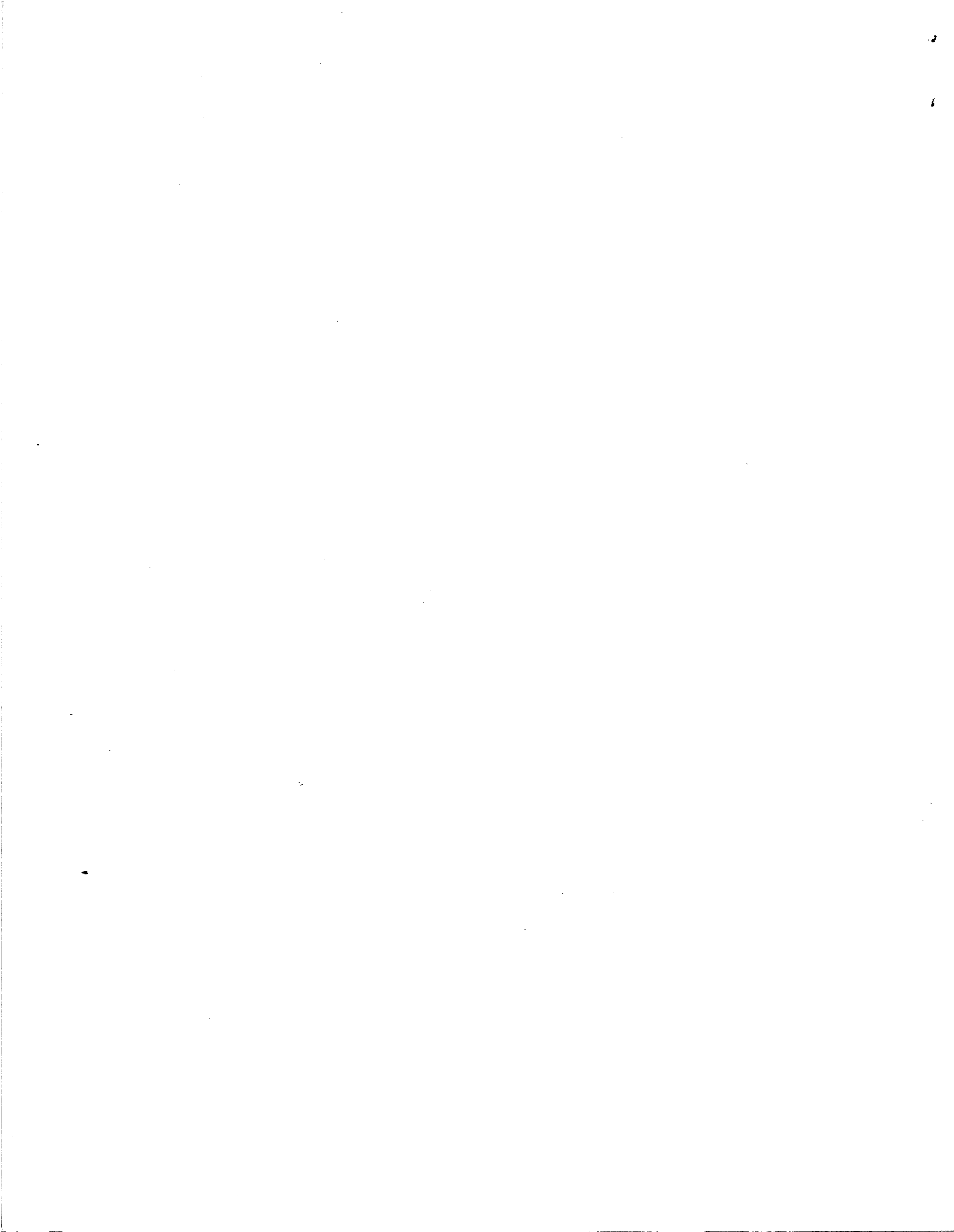


**BEFCO**  
ROCKY MOUNT NC



***HOP BROADCAST SPREADERS***



## SAFETY PRECAUTIONS

1. Read this manual carefully before beginning any operations.
2. Allow only properly trained personnel to operate this machine.
3. Assure that you have a clean working area before starting operations.
4. Read and adhere to all safety and operating stickers on this machine.
5. Never attempt to make adjustments to this machine while the tractor engine is running.
6. Thoroughly inspect spreader before initial operation to assure that all packing materials, i.e. wire, bands, tape, etc., have been removed.
7. Be certain that all hardware is properly tightened.
8. Assure that the tractor is in neutral position before starting engine.
9. Never allow passengers.
10. Never operate without proper shields in place.
11. Be alert for loose hardware and other hazards at frequent intervals.

## OPERATION

The material delivery is controlled by a lever that opens the orfices in the hopper bottom. The lever ( item no. 9 on the parts layout) has settings from 1 to 10 and can be locked on any setting for the desired output.

The quantity of fertilizer per acre depends on the following factors:

1. Tractor ground speed.
2. Spreading width which depends on the fertilizer unit weight.
3. Position of the lever.
4. Speed of the power take off. The maximum speed of the P.T.O. is 540 rpm.

In order to give a guide to the operator, the table below gives the pounds per acre at four different tractor ground speeds verses the orifice opening. The table is based on a medium weight fertilizer and a P.T.O. speed of 540 rpm.

Lever Position	Spreading Width-46 feet lb / acre		
	2.5 mph	5 mph	7.5 mph
1	16	9	5
2	44	22	15
3	120	60	40
4	231	115	61
5	361	181	120
6	483	241	160
7	603	302	201
8	725	362	242
9	845	423	282
10	966	471	323

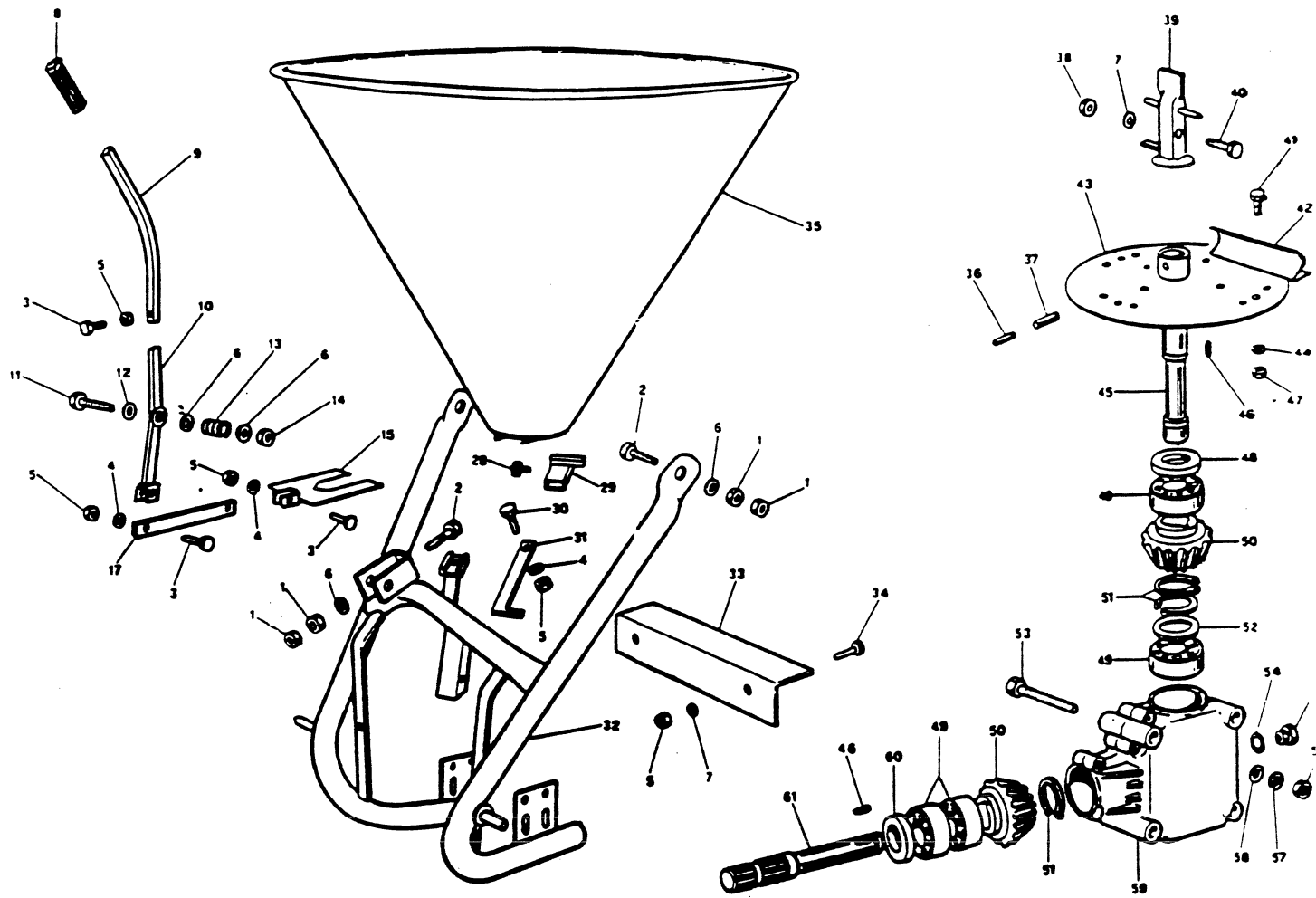
NOTE: The optional tumbling agitator (with rubber wheel) is designed for use with powder type material only.



PARTS  
ILLUSTRATION  
MODEL NO.

SPREADER  
16-209-120  
16-212-120

GR16  
SR2  
CAT. 87





**PARTS  
ILLUSTRATION  
MODEL NO.**

**SPREADER  
16-209-120  
16-212-120**

**GR18  
SR 2  
CAT. 87**

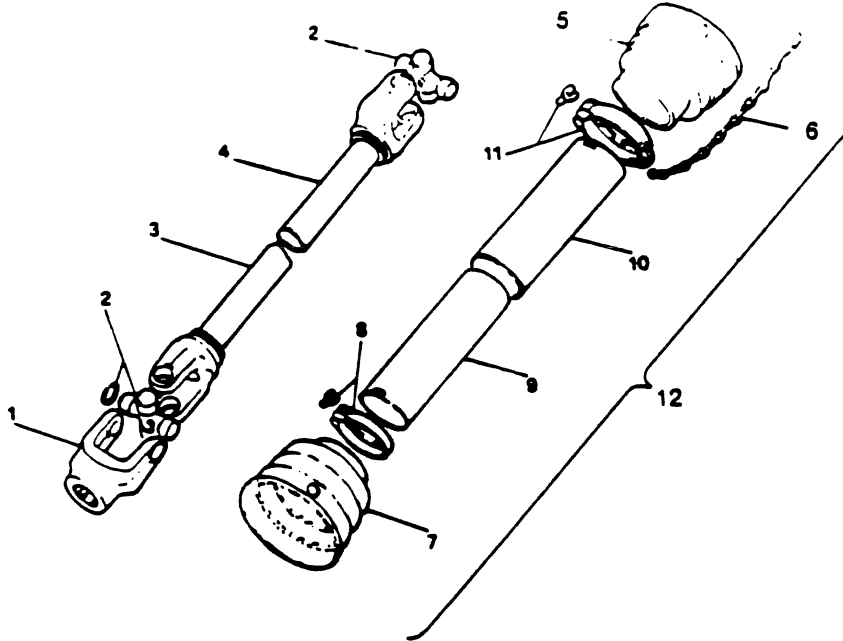
ITEM	PART #	DESCRIPTION	NO.
1	000-1106	M12 nut	6
2	501-5818	M12x30 carriage bolt	3
3	009-1446	M8x25 bolt	3
4	000-3144	M8 lock washer	3
5	000-1806	M8 hexnut	6
6	009-1435	M14 washer	5
7	003-6228	M8 washer	3
8	501-5828	Hand Grip	1
9	501-5838	Lever	1
10	501-5848	Lever Bracket	1
11	000-7128	M12x80 bolt	1
12	501-5858	12x48x3 Nylon Washer	1
13	501-5868	Spring	1
14	001-3345	M12 Nylon Insert Locknut	1
15	501-5878	Shutter	1
17	501-5888	Shutter arm	1
28	501-5898	M8x15 Hand Wheel	1
29	501-5908	Lever Stopper	1
30	001-5220	M8x35 bolt	1
31	501-5918	Scaled Rod	1
32	501-5928	Frame	1
33	501-5938	Guard	1
34	001-5012	M8x20 bolt	2
35	501-5948	209-120 Hopper	1
35a	501-5958	212-120 Hopper	1
36	501-5968	Roll Pin 5x45	1
37	003-2389	Roll Pin 8x45	1
38	009-1384	M8 Nylon Insert Locknut	1
39	501-5978	Stirrer	1
40	009-1455	M8x45 bolt	1
41	003-6319	M6x16 bolt	8
42	501-5988	Spreader Wing	4
43	501-5998	Spreader Disc	1
44	501-6008	M6 lock washer	8
45	501-6018	Outgoing Shaft	1
46	501-6028	Key 8x7x25	2
47	501-6038	M6 nut	8
48	501-6048	Seal 25x47x7	1
49	000-6627	Bearing 6205	4
50	501-6058	Z16 Gear	2
51	501-6068	M25 Locking Ring	3
52	501-6078	Shim	1
53	001-5263	M10x120 bolt	4
54	501-6088	O Ring Seal 15.54x20.78x2.62	1
55	501-6098	Oil cap	1
56	009-0150	M10 nut	4
57	000-1280	M10 lock nut	4
58	000-2034	M10 flat washer	4
59	501-6108	Gearbox Housing Aluminum	1
60	501-6118	Seal 35x47x7	1
61	501-6128	Ingoing Shaft	1
	501-6138	Tumbling Agitator (OPTIONAL)	1
	501-6718	GEARBOX COMPLETE 209 & 212-120	1



PARTS  
ILLUSTRATION  
MODEL NO.

SPREADER  
PTO  
16-2XX-120

GR16  
SR1  
CAT. 44



ITEM	PART #	DESCRIPTION	NO.
1	021 001E	OUTER YOKE-1 $\frac{1}{2}$ "-6	2
2	011 004E	CROSS & BEARING M22 X 54	2
3	210 909E	YOKE & MALE SHAFT	1
4	211 009E	YOKE & FEMALE SHAFT	1
5	013 016E	GUARD CONE OUTER	1
6	016 025E	SAFETY CHAIN	2
7	013 015E	GUARD CONE INNER	1
8	012 006E	LOCKING COLLAR INNER	1
9	111 209E	TUBE SHIELD MALE	1
10	111 109E	TUBE SHIELD FEMALE	1
11	012 007E	LOCKING COLLAR OUTER	1
12	210 209E	SHIELD COMPLETE	1
13	012 007E	BOLT FOR LOCKING COLLAR	6
	948 001B	*PTO-T-10 COMPLETE	1
	026 004E	PUSH PIN SET	2

## MAINTENANCE

### 1. Start-up

- a. Thoroughly lubricate machine.
  - (1) Fill gearbox with SAE 90 wt. oil until level with the fill plug ( item number 55 on the parts layout).
  - (2) Grease PTO universal joints.
  - (3) Grease the sliding shaft of PTO.
- b. Make sure there are no obstructions.
- c. Run machine under a no-load condition for a short while to assure that everything is functioning properly.
- d. Adjust all the settings for the desired quantity distribution and spread pattern.

### 2. Shut-down

- a. Never leave the machine in a raised position when not in use.
- b. Be sure to thoroughly wash machine after use, especially when using salt and fertilizer. This will help prevent the caustic chemicals in salt and fertilizer from destroying the metal of the machine.

### 3. Seasonal storage

- a. Wash and dry machine ( a thin coat of oil on all exposed parts will aid against rust accumulation).
- b. Protect from weather if possible.

..... FOLD AND STAPLE .....

AFFIX  
STAMP  
HERE

**BEFCO**  
P. O. Box 6036  
Rocky Mount, N. C. 27802-6036

**Attention: Warranty Department**